



**GOD'S LOVE  
WE DELIVER®**

2015 ANNUAL REPORT

**FOOD IS MEDICINE. FOOD IS LOVE.**



# DEAR FRIENDS,

**2015** was a year of great transition and expansion at God's Love. As a community we celebrated triumphs together and experienced deep loss, and together we continued to grow, strengthen, and innovate to meet the ever-changing needs of our clients.

This summer, we marked a significant milestone in our expansion project when we "Topped Out" the Michael Kors Building at our SoHo home. Every step in the journey of creating our new building is exciting, and we simply cannot wait for what's to come.

In the fall 2014, we mourned the passing of our dear friend and Board Member Joan Rivers. Joan was one-of-a-kind and irreplaceable. She brought love, compassion and humor to every delivery she made and every event she supported. Joan's impact on God's Love will be felt always by our clients, volunteers, staff and community.

The work on our SoHo home continues at a great pace. We are grateful that so many of our volunteers have continued with us while we are in Brooklyn, and we welcome all of our new volunteers as well. So many people came together to support God's Love this past winter, to help us prepare for Blizzard Juno.

To get ahead of the snow, our drivers left to make deliveries earlier than usual, and our kitchen doubled up on tasks in order to close early. We delivered

Blizzard Boxes to the Far Rockaways and other outlying areas, and kitted meals early. When severe weather strikes the New York metropolitan area, everyone faces special challenges, especially our clients. Thank you to all of our supporters and volunteers who help us weather times like this.

After several years of careful planning, we converted all client meals to a new "chilled and frozen" model. This new plan delivers our freshly prepared meal components either frozen or stored safely below 40 degrees, ready for reheating. Clients tell us they love the new model as it gives them greater choice over what to eat when.

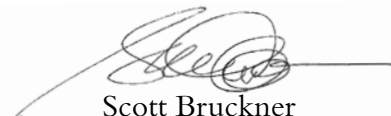
In the kitchen, we continue to enhance our menu to provide clients with the best possible experience. Our Nutrition Department published a new booklet, "Nutrition Tips for Caregivers," designed to guide nutritional choices, help manage concerns, and make caregiving a little easier for those who are caring for their loved ones.

As God's Love continues to expand, there are some things that never change. As has been true for 30 years, we believe that being sick and hungry is a crisis that demands an urgent response. As such, we remain committed to our core principles of delivering each client's first meal on the next delivery day, never charging our clients for their meals, and most importantly, never having a waiting list. Our dedication to these principles is made possible because of the generosity and unwavering commitment of all our volunteers and supporters.

Sincerely,



Karen Pearl  
President & CEO



Scott Bruckner  
Chairman of the Board

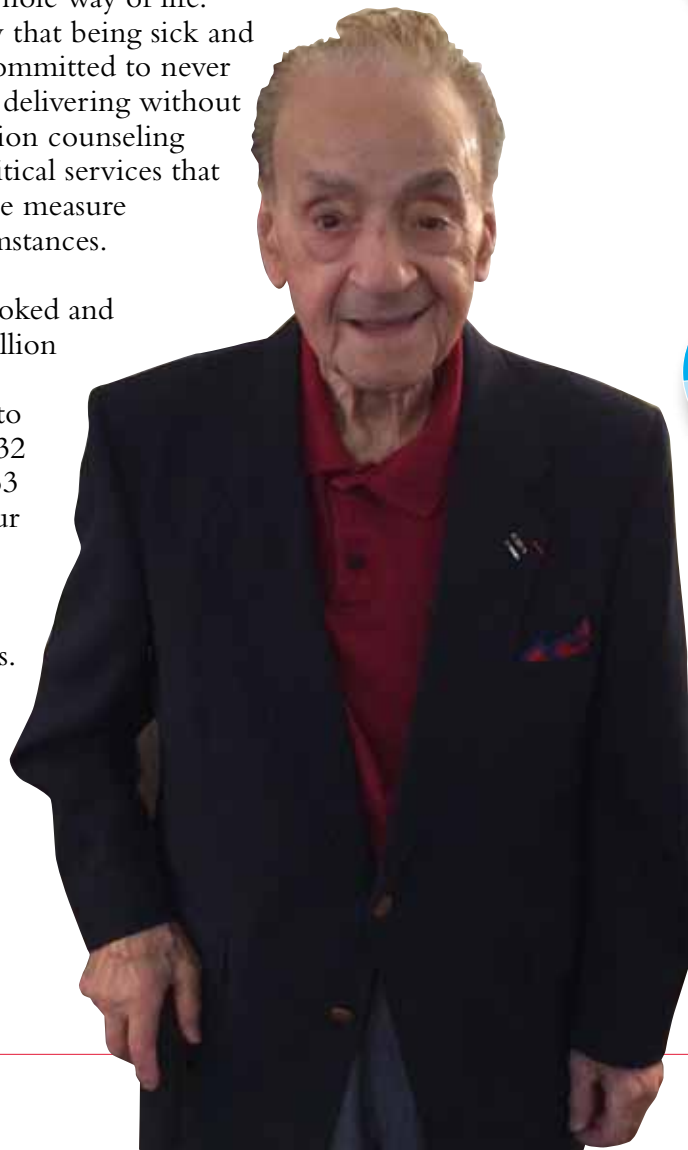


# FOUNDING PRINCIPLES

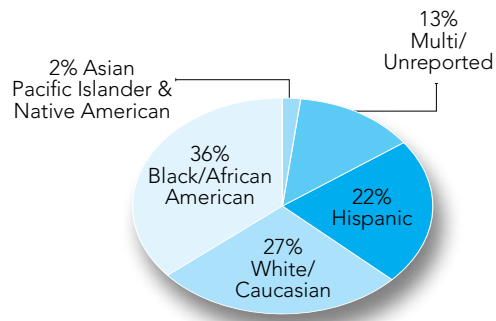
Our clients are living with severe illnesses that affect their whole way of life.

Because we know that being sick and hungry is a crisis, we are committed to never charging for a meal and to delivering without delay. The meals and nutrition counseling God's Love provides are critical services that help them also to take some measure of control over their circumstances.

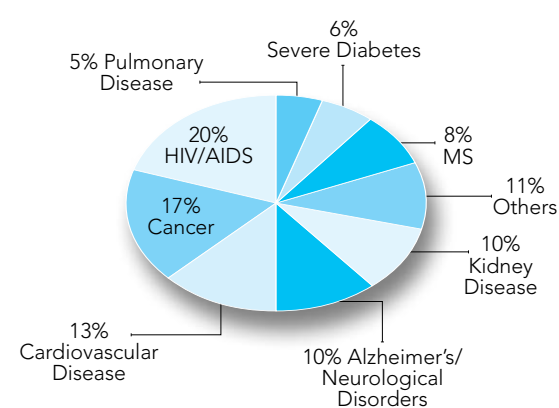
In FY 2015, God's Love cooked and delivered more than 1.3 million meals, a record for our organization. We delivered to a total of 5,757 people: 5,232 clients, 272 children and 253 senior caregivers. 90% of our clients live at or below the poverty level, many living in the region's most underserved neighborhoods. The meals we deliver help reassure and comfort our clients as we deliver hope and love, all wrapped up in a nutritious meal.



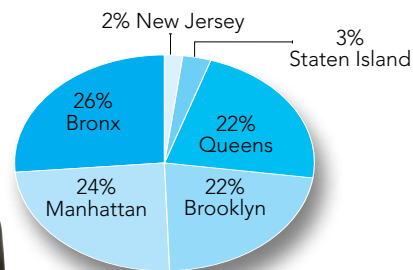
RACIAL/ETHNIC DISTRIBUTION



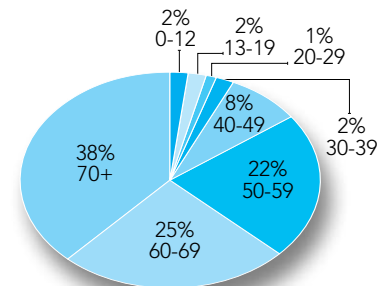
DIAGNOSIS



SERVICE AREA



AGE



*"I'm just amazed at how they've changed my life... I don't know what I would do without God's Love. They give you the proper diet. It's just terrific."*

GOD'S LOVE CLIENT ROCCO

# NUTRITION IS OUR SIGNATURE DIFFERENCE

Every client on our program works with a Registered Dietitian Nutritionist to make sure we design the custom meal program that best meets each person's specific medical and nutrition requirements. We are proud of this signature difference – individualized nutrition attention sets us apart from all other meal programs.

Every day, our meals are individually tailored with the freshest and highest quality ingredients to ensure that our clients always receive optimum nutritional value. From the development of our therapeutic menus, to nutrition counseling and to the safe delivery of our client meals, we see the power of food as medicine and understand the significance of proper nutrition.



OUR BBQ CHICKEN  
LEG WITH GEMELLI  
SUMMER PASTA SALAD &  
GLAZED CAROTS



VOLUNTEERS FROM PIMCO



VOLUNTEERS AND STAFF  
PARTICIPATING IN THE BIG  
APPLE CRUNCH

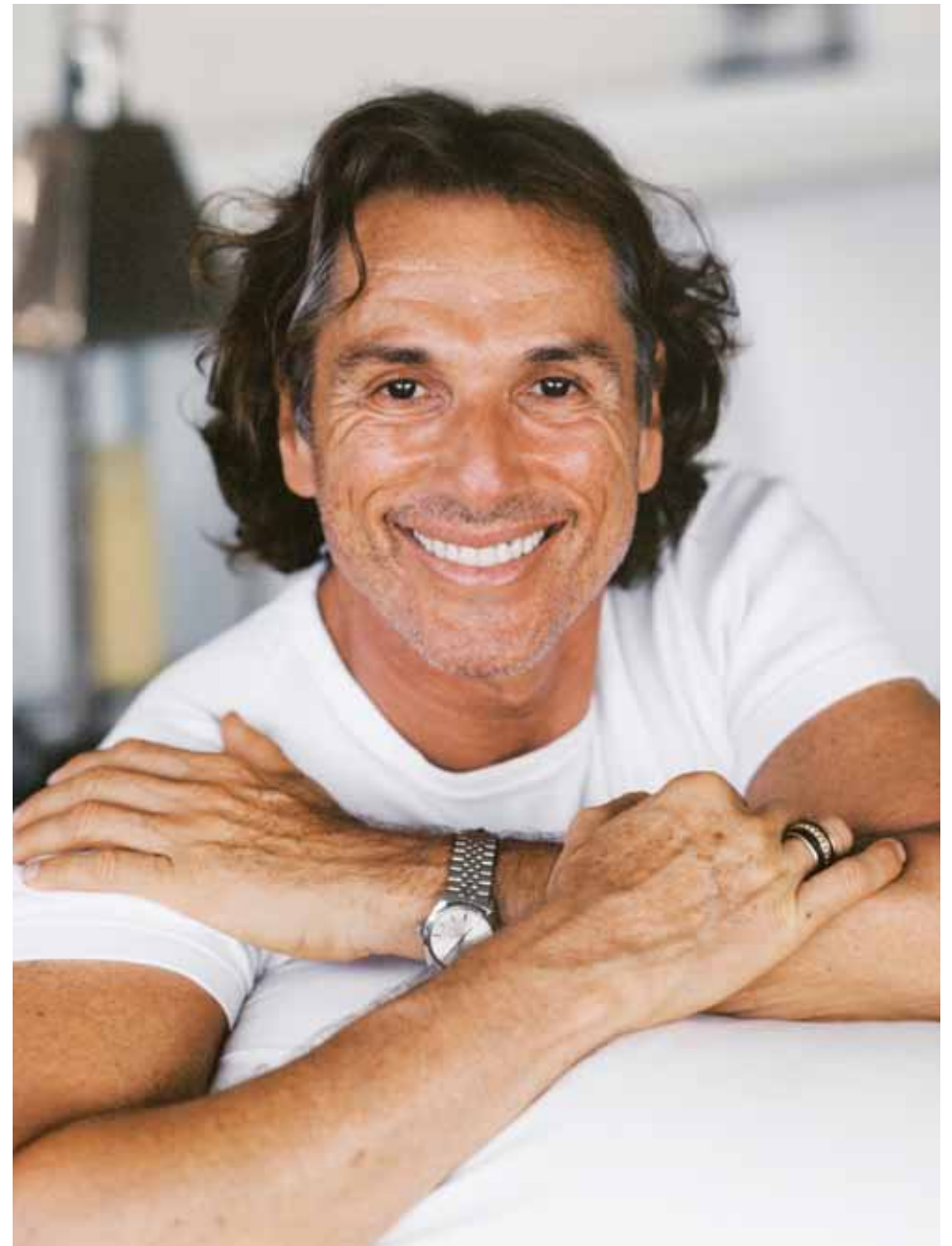
# CREATING A LEGACY

It is our hope that each generation will help provide for the next, so that we can always be there for clients at a time in their lives when they need us most. In 2011 we formed our Legacy Society and today we thank those who have joined this society helping us secure our future.

Many thoughtful friends have chosen to include God's Love in their estate plans. Doing so is a demonstration of their dedication and compassion for the important work we do.

"The best legacy you can leave is one that keeps on giving. The Legacy Society keeps your memory alive. And for me it's important that the support I give God's Love We Deliver carries on."

Vicente Wolf  
Interior Designer and  
Legacy Society Member



# NEWS FROM THE YEAR



TOPPING OUT

Our fiscal year 2015 was marked by many exciting events and important transitions. On July 30, 2014, we “Topped Out” the new Michael Kors Building at God’s Love We Deliver in SoHo by installing the building’s highest and final beam. God’s Love staff joined volunteers, donors, architects from GKV, the JRM construction team, and other supporters for the ceremony. Attendees signed the beam, and watched it rise high above Spring Street as it was installed. This was a significant milestone in our expansion project, and an important step toward returning to our new home.



JOAN RIVERS

While the year brought with it tremendous growth and many delightful, productive occasions for God’s Love, everyone in the God’s Love community was heartbroken at the loss of our beloved Joan Rivers on September 4, 2014. Joan was a dear friend of God’s Love for over 25 years, and a member of the Board of Directors since 1994. Throughout her years of service, Joan demonstrated deep commitment, compassion and generosity. In honor and commemoration of her work with God’s Love, we named the bakery in the new Michael Kors Building the Joan Rivers Bakery. She will forever be in our hearts.



RIDE TO REINVENT

On October 18, Douglas Elliman extended their generosity to God’s Love by participating in the Ride to Reinvent. Team Elliman set off on a 100 mile bike ride from New York City to Atlantic City to raise funds and awareness for God’s Love. Team Elliman raised an astonishing \$50,000 for God’s Love! We are so grateful for their support, and proud to be a part of the Ride to ReInvent. Dottie Herman, President & CEO of Douglas Elliman, and Howard Lorber, Chairman of Douglas Elliman, generally matched the funds raised by the team. In total, Team Elliman raised \$100,000 to fund 10,000 meals for the clients of God’s Love.

# NEWS FROM THE YEAR



BIG LOVE WEEKEND

For the second year in a row, God's Love was the beneficiary partner of the Outsider Art Fair in January 2015. Many who attended the Outsider Art Fair support God's Love, and 100% of ticket sales sold on [glwd.org](http://glwd.org) for the opening night of the Fair went directly to support our work. Friends, supporters and members of our young professionals group, generation LOVE, all came out to enjoy good food and drinks, wonderful art, and great company.

On February 28 and March 1, God's Love We Deliver was the honored beneficiary of Big Love Weekend, founded by our dear friend, volunteer and supporter, Jase Cannon. This wellness weekend of yoga, fresh juice, delicious and healthy food, live music, and dancing, brought yogis and friends together to celebrate love and support God's Love! Thanks to Jase Cannon and every donor, volunteer and supporter of the event, Big Love Weekend raised



SOTHEBY'S

more than \$60,000 to benefit God's Love We Deliver, which will help fund more than 6,000 nutritious, individually tailored meals for the clients of God's Love living with severe illness.

Sotheby's Auction House hosted a private cocktail party and exclusive preview of Sotheby's Spring Sales of Impressionist, Modern & Contemporary Art on April 30, in honor of God's Love We Deliver. We were joined by art lovers, God's Love supporters, and special guest Alan Cumming for cocktails, delicious hors d'oeuvres, and beautiful art.

On May 19, we were honored to celebrate Real Simple's 15th Anniversary with an exclusive event at the Food & Wine Chefs Club. Hosted by Kristin van Ogtrop and Adam Lippes, the event featured cocktails and hors d'oeuvres inspired by InStyle, Food & Wine, Travel & Leisure, and Southern Living. It was a



PRIDE

one-of-a-kind opportunity to mingle with editors, publishers, friends of God's Love We Deliver and more—and all proceeds went to God's Love.

On Sunday, June 28, hundreds of staff and volunteers from God's Love joined together at the 46th Annual Heritage of Pride March. For more than 25 years, God's Love has participated in the March, put on by NYC Pride (The Official NYC LGBT Pride Organizer). This was the fourth time God's Love and the dedicated and proud team members of Whole Foods Market NYC have partnered together, and we are proud to join with such a philanthropic and health-oriented company. Thanks to everyone who came out as we exclaimed #FeedYourPride!

Thank you for helping make it a great year at God's Love.

# THE HOLIDAYS AT GOD'S LOVE

This year, the second from our Brooklyn home, we delivered a record number of holiday meals to clients, children and guests on Thanksgiving and Christmas Eve morning.

Holiday planning begins more than two months in advance, with an initial meeting between our Delivery team, Kitchen crew, Volunteer department, and other staff members in early September. Client numbers grow year-round, with an extra boost of new clients during the holiday season. In early October, our Client Services Representatives contact every client and ask if they would like to invite a guest, as we believe that no one should have to spend the holidays alone. Many local schools and their students participate in our bag decorating program. We ramp up our recruitment of volunteers to make sure we have the help we need to deliver over 4,000 holiday meals.

By the beginning of November, we have printed our menu cards and finished receiving the last of our client RSVPs. Careful thought is given to what items

we need for the Emergency Meal Kits that we provide to every client. The weekend before Thanksgiving, almost 100 dedicated volunteers come in to assemble special gift baskets filled with holiday treats for our clients. The week of each holiday, we are busy counting every single meal component, confirming all volunteers, coordinating press and putting the finishing touches on getting our building holiday-ready.

On Thanksgiving and again in December, the kitchen staff begins work at 3:00 a.m. and our volunteers join them by 6:00 a.m., always with huge smiles on their faces. By 7:00 a.m., our delivery drivers start packing containers of hot meals to be delivered to meal distribution centers all across the city. Beginning at 9:00 a.m., devoted volunteers turn up at our Brooklyn office and at all of the meal centers, to pick up meals, boxes and baskets that are delivered to clients.

Every holiday is special at God's Love and, with the help of hundreds of volunteers, we are able to deliver meals and holiday cheer without charge, without fail, and most importantly, with love.



VOLUNTEERS AT BASKET DAY



HEADING OUT TO DELIVER  
ON CHRISTMAS EVE

VOLUNTEERS ON  
THANKSGIVING



# VOLUNTEERS

We simply could not do what we do without the unwavering support of our wonderful volunteers. Incredibly, each year, nearly 8,000 people volunteer in some capacity, providing over \$2 million of donated time and service.

Volunteers come from all walks of life to help us complete our important mission every single day. We're joined by our weekly volunteers as well as corporate groups from such companies as Levi Strauss, American Express, M•A•C Cosmetics, Macy's, Bloomingdale's, Deutsche Bank, CBS and Ralph Lauren. In FY2015, we worked with 1,034 corporate groups.

We are extremely grateful for their dedication and the time they give to help others in need.



LEVI STRAUSS



M•A•C COSMETICS



BLOOMINGDALE'S



CBS



RALPH LAUREN



MACY'S

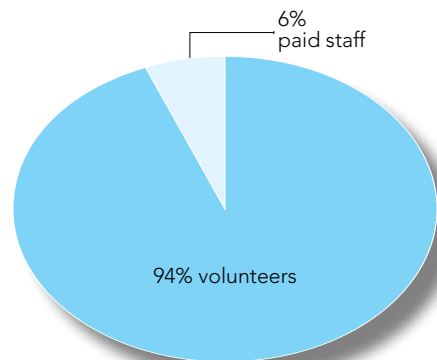


DEUTSCHE BANK



AMERICAN EXPRESS

Monthly Volunteers	1,230
Paid Staff	78
	1,308



# OUR SUPPORTERS

Through the generosity of more than 19,000 individuals, corporations and foundations, and with additional public support, we were able to prepare and deliver 1,366,489 meals in FY15.

God's Love We Deliver relies on the generosity of thousands of donors annually to support its \$13 million budget. Unlike most food and nutrition organizations in New York City, God's Love receives the majority of its funding from private sources, nearly 65%, in fact. This makes each gift that much more critical to our ongoing work. God's Love is a good steward of all funds received, with 79% going to support our programs and services, helping us to earn a four-star rating from Charity Navigator.

Our community's commitment helps make it possible for us to reach the 5,700+ men, women and children living with life-altering illnesses whom we serve every year. Thank you!





# LOYAL FRIENDS SUPPORT OUR URGENT MISSION



MIDSUMMER NIGHT DRINKS



GOLDEN HEART AWARDS



AUTHORS IN KIND



RACE TO DELIVER

God's Love We Deliver hosts four signature events annually, which play a significant role in achieving our overall fundraising goals.

In October, we held our 8th Annual Golden Heart Awards dinner. Anna Wintour received the Michael Kors Award for Outstanding Community Service and we celebrated the remarkable contributions of President and CEO of CBS Corporation Leslie Moonves, who received his award from Academy Award-winning actress and United Nations World Food Programme Honorary Partner Halle Berry. Michael Kors also presented longtime volunteer

and former Board chair Richard E. Feldman with the Golden Heart Award for Outstanding Volunteerism.

In November, we held our 21st Annual Race to Deliver in Central Park. The Park was bursting with over 5,000 runners, including more than 300 children in the Kids' Fun Run.

In the spring, we held our 12th Annual Authors In Kind. God's Love Board Member and best-selling author Linda Fairstein emceed the event. Marcus Samuelsson spoke on the importance of food for community, how food nourishes the body and the spirit, and the importance of bringing meals to our neighbors.

Brad Gooch spoke of his life in the 1980s in New York City, a relevant and moving topic, as that was the time of the founding of God's Love We Deliver. And Harlan Coben had the audience laughing with short stories on raising teenagers and what life is like for a writer.

We concluded the year with our Midsummer Night Drinks party at the home of Richard and Marcia Mishaan, where rain couldn't dampen the spirits of the more than 300 guests who came out to support God's Love.

We are deeply grateful to everyone who supported our fundraising efforts this year.

# OUR EXPANSION CAMPAIGN

Every day more people living with HIV/AIDS, cancer, Alzheimer's disease and other life-altering illnesses call God's Love We Deliver looking for help.

As our numbers have continued to reach a new watermark each year, we find ourselves at a critical crossroads. Our need for an expanded building is urgent.

Since fundraising began in 2011, we are ever closer to our \$36 million fundraising goal, thanks to a \$5 million gift from Michael Kors, an \$8 million capital allocation from the City of New York, \$2 million from Steven and Alex Cohen, and \$1 million from Jeff Gates and Mike Moran."

Our new building, at 48,500 square feet, will more than double our original 18,000 square foot facility, ensuring our ability to continue to

meet the needs of some of the most vulnerable among us for years to come. The new facility, to be named The Michael Kors Building at God's Love We Deliver in recognition of Michael's extraordinary gift, will feature a state-of-the-art industrial kitchen, covered loading dock and rooftop herb garden.

Thank you to everyone who has made this amazing initiative possible.

ARCHITECT'S DESIGN  
OF NEW BUILDING



# FINANCES

Fiscal year 2015 (July 1, 2014 – June 30, 2015)

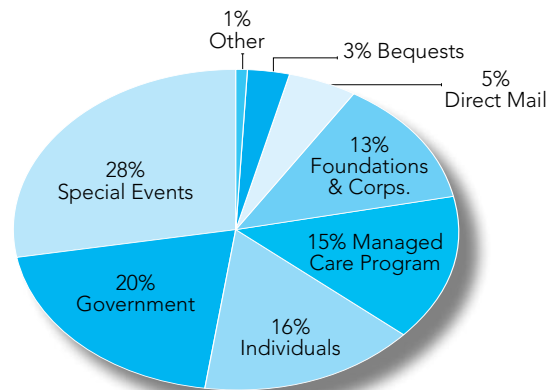
Funding from generous individuals, foundations, corporations, and government sources provide a diversified base of support, helping to ensure that we are able to continue our work without reliance on one revenue stream. We work hard to guarantee that valuable contributions are used on behalf of our clients. In FY2015, 79% of all revenue went directly to client services. Our donors expect no less.



God's Love We Deliver has achieved the highest standards set by these charitable ratings organizations.



## REVENUE



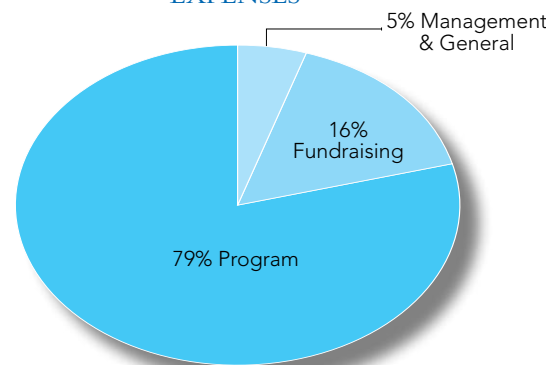
## REVENUE

Government	\$2,584,052
Foundations and Corps.	\$1,651,478
Individuals	\$2,061,370
Direct Mail	\$633,039
Bequests	\$363,863
Managed Care Program	\$1,943,873
Special Events	\$3,680,772
Other	\$149,715
<b>Total</b>	<b>\$13,068,162</b>

## EXPENSES *excluding depreciation*

Program	\$9,459,858
Management & General	\$643,838
Fundraising (incl. Events)	\$2,613,897
<b>Total</b>	<b>\$12,717,593</b>

## EXPENSES



## STATEMENT OF ACTIVITIES

Revenue	\$12,488,521
Expenses before Depreciation	(\$12,137,952)
Operating Surplus	\$350,569
Depreciation	(\$856,295)
Change in Assets	(\$505,726)
Capital Campaign Revenue	\$11,942,669
Capital Campaign Expense	(\$81,484)
Donated Securities	\$475,916
Change in Net Assets from All Sources	\$9,158,810
Net Assets Beginning of the Year	\$31,535,557
Net Assets End of the Year	\$40,694,367

# RESPONDING TO THE DEMAND

*We gratefully thank those who have pledged their support to our Expansion Campaign.*

## \$1,000,000 +

City of New York  
Steven and Alexandra Cohen  
Mr. Michael D. Kors and  
Mr. Lance L. Le Pere  
Mr. Christopher Lacovara  
and Mr. Sam Green  
Mr. R. Michael Moran and  
Mr. Jeff Gates

## \$100,000+

American Express  
The Avon Foundation for  
Women  
Broadway Cares/Equity  
Fights AIDS  
Mr. Scott A. Bruckner  
The Calamus Foundation  
Calvin Klein  
Diamond Family Foundation  
Mr. Jonah Disend  
Mr. Richard E. Feldman and  
Mr. Jon C. Nathanson  
Bob & Eileen Gilman  
Family Foundation  
Mr. Jon H. Gilman and  
Mr. Brad Learmonth  
The Staff of God's Love  
The Volunteers of God's Love  
Mr. Lester Gribetz  
Leona M. and Harry B.  
Helmsley Charitable Trust  
John L. Klebanoff  
The Idol Family

Jeffrey M. Krauss, Esq.  
Mr. Mark H. Lanspa  
Mr. Mark Lehrer, Esq. and  
Mrs. Gaby Ferman Lehrer  
Mr. John Burger and  
Mr. Alan G. Levin  
The M•A•C AIDS Fund  
Anne and Joseph McCann  
Mr. Michael Meagher and  
Mr. Daniel Romualdez

Mr. Terrence Meck  
Bruce, Reed, & Lily Nelson  
Mr. Jeffrey A. Pfeifle  
The Robert C. Quinlan Family  
Lorraine and Robert W.  
Reeder III  
Mr. Alan J. Rogers  
Billie and George H. Ross  
Mr. Michael A. Sennott  
Mr. David A. Terveen  
The H. van Ameringen  
Foundation  
The Judith C. White  
Foundation  
Mr. Dax and Mrs. Rielly Vlassis

## \$50,000+

Mr. Mark S. Brashear and  
Mr. James A. Shreve  
The Bessent-Freeman Family  
Ms. Faith E. Gay  
David Geffen  
JRM Construction  
Management, LLC

Macy's and Bloomingdale's  
Mr. Gerald Madigan and  
Mr. Richard J. Pipia, Jr.  
Mr. Terence S. Meehan  
Ms. Karen L. Naber and  
Mr. Faris Naber  
Ms. Lisa E. Sherman  
Ted Snowdon and Duffy  
Violante  
Jonathan and Lizzie Tisch  
Wells Fargo

Barbra Zuck Locker and  
Penny Zuckerwise

## \$10,000+

AXA  
Mr. Jonathan H. Bond and  
Mrs. Rebecca Bond  
Ms. Candy Bonder  
Mr. Peter B. Carzasty  
Mr. Lloyd Cheu and  
Dr. Douglas Mintz  
Ms. Lynn DeGregorio  
Ms. Linda Fairstein and  
Mr. Michael Goldberg  
Mr. Terry Fitzpatrick and  
Mr. Stephen Perepeluk  
Mr. and Mrs. Ronald Frankel  
Mr. Jerry Frankel  
Ms. Barbara Goodstein  
Don Mullen - Goldman  
Sachs Gives  
Dr. Bruce Horten and  
Mr. Aaron Lieber

The Hyde and Watson  
Foundation  
Mrs. Marlise C. Konort  
Mr. Raymond J. Kurdziel  
and Mr. Howard A. Zar  
Philip and Madeline Lacovara  
Dr. Perry S. Eisman and  
Peter B. Lichtenthal  
Mr. Adam F. Lippes  
David C. Ludwigson and  
LaMont W. Craig  
Long Island Community  
Foundation Richards  
Family Fund  
Mr. Mickey MacIntyre  
Ms. Durga Mallampalli  
Ms. Marnie McBryde  
Ms. Karen Pearl and  
Mr. Stephen J. Brown  
The Polo Ralph Lauren  
Foundation  
Mr. Steven Andrew Rank  
Ms. Arlene Richards  
Mr. Stoddard A. Sennott and  
Ms. Jennifer Kellog  
Austin and Stephen Smith  
Ms. Blaine Trump  
Ms. Sylvia R. Vogelmann  
The New York Community  
Trust-Wallace Special  
Projects Fund  
Mr. Paul Wilmot  
Mr. Gregory Aaron Wiseman

## \$1,000+

AFI Foodservice, LLC  
Mr. Anil D. Aggarwal  
Ms. Maya Arison  
Mr. Jens Audenaert and  
Mr. Amol Shah  
Dr. Lawrence Balter and  
Ms. Karen M. Adams  
Ms. Colleen M. Barrett  
Dr. and Mrs. Bernard J. Biron  
Ms. Laurie E. Bloomfield  
and Mr. Jay Bloomfield  
Ms. Ann E. Bodnar  
Mr. Richard A. Bradspies and  
Mr. Dore Everett  
Mr. Albert B. Connor  
Mr. Joseph Covelli and  
Mr. William Lucia  
Mr. and Mrs. Kevin  
Cunningham  
Ms. Mary Ann Czarcinski  
Mr. Jack deLashmet  
Ms. Randy J. and Robert  
Deutsch  
Mr. Mitchell Draizin and  
Mr. Philippe Brugère-  
Trélat  
Paula N. and Fred W. Drake  
Fund  
Mr. Alan D. Dunkelberger  
Mr. Ioannis Dunn-  
Srimuangboon  
Mr. Donald N. Eckert  
Ms. Spring Fairbank  
Ms. Laura Ferraro  
Mr. Richard A. Fink  
For A Cause, Inc.  
The Wallace Fox Foundation

Mr. Bryan Frank  
Ms. Patricia A. Freeman  
Evans  
Ms. Valentia C. Friedman  
Ms. Gay N. Gassmann  
Michael & Lola Goodstein  
Charitable Foundation  
Trust  
Mr. Christian Grattan  
Mr. Joey Grill  
Ms. Susan Groarke and  
Mr. Kevin Groarke  
Ms. Desiree E. Gruber and  
Mr. Kyle MacLachlan  
Hall Capital Partners LLC  
I. Halper Paper & Supplies,  
Inc.  
Mr. David S. Hinton  
Mr. W. M. Kanyuck  
Mr. Joseph F. Kirk and  
Mrs. Lauren E. Kirk  
Mrs. Barbara W. Kummel  
Mr. Thomas R. Lalla, Jr.  
Lane Marketing Group LLC  
Ms. Ellen C. Lerner  
Dr. Julia A. Masi  
Mr. Brian J. McCarthy and  
Mr. Daniel Sager  
Mr. Charles McEwen  
Mr. William R. Meagher and  
Ms. Ruth Meagher  
Ms. Jean Mitchell  
Mrs. Helene and  
Mr. Henry Morrison  
National Retail Federation  
Mr. and Mrs. Richard J.  
Novick  
Mr. and Mrs. James L.  
O'Connor

Ms. Nancy E. Pirodsky  
Ms. Anne H. Rimm  
Mr. Jeffrey Schneider and  
Ms. Karin Schneider  
Ms. Carolyn Schreck  
Ms. Jane E. Schulman  
Ms. Jane L. Shea and  
Mr. Patrick W. Shea  
Ms. Sarika Singh  
Ms. Shannon D. Snead  
Mr. Mitchell Sockett and  
Mrs. Sandra Sockett  
Mr. Howard Sugarman  
David Stark Design and  
Production  
Mr. David Stark and  
Mr. Miguel A. Pinto  
Ms. Katherine Stults Titus  
Ms. Tamara R. Tunie  
Dr. Hester Turner  
Mr. Daniel Bobby Tuttle and  
Mr. George Goeschel, Jr.  
US Foods, Inc.  
Ms. Deborah E. Virella  
Vicente Wolf Associates, Inc.  
Mr. Vicente Wolf  
Mr. James Wood  
Mr. Nicholas Yarmac and  
Mr. JP McCary  
Ms. June M. Yearwood  
Mrs. Kathleen A. Zammit  
and Mr. Victor J. Zammit  
Ms. Kristin E. Zimmermann

# WE THANK OUR SUPPORTERS

*for gifts received July 1, 2014 – June 30, 2015,  
excluding gifts to our Expansion Campaign.*

## Visionary

**\$100,000+**

AERIN LLC  
American Express Foundation  
Anne Ottolenghi Trust  
Avon Foundation for Women  
CBS Corporation  
Condé Nast Publications  
Fossil Partners, L.P.  
Orland S. and Frances S. Greene Fund  
Mr. Michael D. Kors and Mr. Lance L. Le Pere  
The Kors Le Pere Foundation  
Michael Kors, Inc.  
Ms. Aerin Lauder and Mr. Eric Zinterhofer  
M•A•C AIDS Fund  
Mr. Terrence A. Meck and Mr. Breton Alberti  
The New York Community Trust  
RJKB Family Charitable Foundation  
Mr. David A. Terveen  
Mrs. Katy Y. Williamson and Mr. Greg S. Williamson  
Wells Fargo  
Wells Fargo Foundation

Mr. Michael D. Kors and Mr. Lance L. Le Pere  
The Kors Le Pere Foundation  
Michael Kors, Inc.  
Ms. Aerin Lauder and Mr. Eric Zinterhofer  
M•A•C AIDS Fund  
Mr. Terrence A. Meck and Mr. Breton Alberti  
The New York Community Trust  
RJKB Family Charitable Foundation  
Mr. David A. Terveen  
Mrs. Katy Y. Williamson and Mr. Greg S. Williamson  
Wells Fargo  
Wells Fargo Foundation

## Founder

**\$50,000+**

Bloomingtondale's  
BNY Mellon Foundation  
Estate of Jonathon E. Brodman  
Estate of James J. Flood

The Gates Family Philanthropic Fund  
Mr. R. Michael Moran and Mr. Jeff Gates  
Bob & Eileen Gilman Family Foundation  
Mrs. Eileen Gilman  
Mr. Jon H. Gilman and Mr. Brad Learmonth  
The Greater New York City Affiliate of Susan G. Komen  
Macy's  
Mr. Michael J. Meagher and Mr. Daniel Romualdez  
Mr. Bruce S. Nelson  
Mrs. Lily Safra  
Mr. Michael A. Sennott  
Simone Accessories Collection Ltd.  
Mr. Howard Stern and Ms. Beth A. Ostrosky

## Benefactor

**\$25,000+**

21st Century Fox  
Mr. Robert A. Altman and Ms. Lynda Carter  
AMAZON  
Mr. Michael Anthony  
Benevity Community Impact Fund  
Ms. Candice Bergen  
Bloomberg  
Mr. and Mrs. Justin Boisseau  
Broadway Cares/Equity Fights AIDS  
Mr. Thomas J. Browne  
Mr. Scott A. Bruckner  
Mrs. Jennifer Diamond

Mr. Jonah Disend  
Estée Lauder Companies Inc.  
Ms. Linda A. Fairstein and Mr. Michael B. Goldberg  
Fairstein Enterprises LLC  
Mr. Philip H. Geier, Jr. and Ms. Julie Weindling  
Aaron and Betty Gilman Family Foundation Fund  
Mrs. Betty H. Gilman  
Gramercy Tavern  
Ms. Dorothy Herman  
Mr. David Hockney  
Mr. and Mrs. John Idol  
Ms. Scarlett Johansson  
Jujamcyn Theatres  
Mr. Christopher Lacovara and Mr. Sam Green  
Mr. Howard M. Lorber  
Lord & Taylor  
Luxottica  
Mr. Brian J. McCarthy and Mr. Daniel Sager  
Mr. James Murdoch  
Nordstrom, Inc.  
Piaget  
Mr. Jeffrey A. Pfeifle and Mr. David Granville  
Polo Ralph Lauren Foundation  
QVC, Inc.  
Rockefeller & Co.  
Mr. Alan J. Rogers  
Ms. Margaret Russell  
The Sharma Foundation  
Mr. Louis Guy Sollecito  
Tiffany & Co.  
Mr. Henry van Ameringen  
Viacom

Mr. Jeffrey A. Pfeifle and Mr. David Granville  
Polo Ralph Lauren Foundation  
QVC, Inc.  
Rockefeller & Co.  
Mr. Alan J. Rogers  
Ms. Margaret Russell  
The Sharma Foundation  
Mr. Louis Guy Sollecito  
Tiffany & Co.  
Mr. Henry van Ameringen  
Viacom

Mr. Dax and Mrs. Reilly Vlassis  
Vogue  
Ms. Diane von Furstenberg and Mr. Barry Diller  
The Wasily Family Foundation

## Advocate

**\$10,000+**

Mr. Jens Audenaert and Mr. Amol Shah  
Alcoa Foundation  
Mr. and Mrs. Anthony G. Ambrosio  
Americas Business Solution  
Frank J. Antun Foundation  
Aon Foundation  
Mr. Jeffrey M. Applegate  
Assurant Foundation  
Lily Auchincloss Foundation  
Automatic Data Processing Inc.  
Ms. Kristin M. Benasich  
Ms. Stephanie H. Bernheim  
The Bernheim Foundation, Inc.  
Ms. Halle Berry  
Binn Family Foundation  
Mr. Jason and Mrs. Haley Binn  
Ellen & Ronald Block Family Foundation  
Mr. Jon and Mrs. Rebecca Bond  
Brattleboro Retreat  
Mr. and Mrs. Jerry Bruckheimer  
Tory Burch LLC  
C2C Outdoor  
Capital One

The Y.C. Ho/Helen and Michael Chiang Foundation  
Ms. Jane Chung  
CJS Industries, Inc.  
CKEW Foundation  
Coach, Inc.  
The Cowles Charitable Trust  
Sami David, M.D. and Mrs. Rena Shulsky David  
DIFFA  
Dr. Praeger's Sensible Foods  
Mr. Thomas F. Dunn and Mrs. Susan Dunn  
Mr. Jon Patrick Ehlen  
Ernst & Young LLP  
Facebook  
Mr. Richard E. Feldman and Mr. Jon Nathanson  
Mr. Timothy Fortune  
Jill and Jayne Franklin Charitable Trust  
Ms. Gillian Spreckels Fuller  
The Gillian S. Fuller Foundation, Inc.  
Gap Inc.  
Gensler  
Estate of Renee Getler  
Global Brands Group  
Goldman Sachs & Company  
Ms. Barbara Goodstein  
Mr. Michael Goss  
Mr. Lester Gribetz  
Ms. Desiree Gruber and Mr. Kyle MacLachlan  
Guggenheim Partners, LLC  
Mr. Jeffrey and Ms. Amy Harrow  
Home Box Office, Inc.  
HSBC  
Hudson's Bay Company  
Huniford Design Studio  
Mr. James D. Huniford  
idX Corporation  
The Imperial Court of New York, Inc.

The Interpublic Group of Companies, Inc.  
The JPB Foundation  
Herman Kay Company, Inc.  
Laurie Kayden Foundation  
Mr. Daniel S. Kennedy  
Mr. Calvin Klein  
Kohn Pedersen Fox Associates PC  
KPMG  
Jeffrey M. Krauss, Esq.  
The Krumholz Foundation  
Mr. Matthew LaFarge  
Mr. Mark H. Lanspa  
Mark R. Lehrer, Esq. and Mrs. Gaby Ferman Lehrer  
Ms. Roberta H. Levine  
Ms. Adrian Kahan Liebowitz  
Lighting Management, Inc.  
Mr. Adam F. Lippes  
The Gerald & Sandra Lippes Foundation  
Lorber Charitable Fund  
MAB LivingTrust  
MAZON: A Jewish Response to Hunger  
McMaster-Carr Supply Company  
Mr. Terence S. Meehan  
Morgan Stanley & Co., LLC  
Morgan Stanley Foundation  
Ms. Carolyn A. Murphy  
Ms. Karen L. Naber and Mr. Faris Naber  
Mr. Jonathan Newhouse  
Newman's Own Foundation  
Stavros Niarchos Foundation  
Henry Nias Foundation, Inc.  
Mr. Richard J. and Mrs. Jane Novick  
The Palette Fund  
Kenneth Park Architects LLC  
Mr. Kenneth Park  
Paul, Weiss, Rifkind, Wharton & Garrison, LLP

Pfizer  
Mr. David Stark and Mr. Miguel A. Pinto  
Planit Construction Inc.  
PricewaterhouseCoopers LLP  
Proskauer Rose LLP  
R/GA Media Group, Inc.  
Redwood Interior PTE LTD  
Mr. and Mrs. Robert W. Reeder, III  
Mr. Bill Ribbecke and Ms. Kristi Ribbecke  
Ms. Melissa Rivers  
The Rona Jaffe Foundation  
Mr. Richard Rose  
Mr. Andrew Rosen  
J. Rosenberg Administrative Trust  
May and Samuel Rudin Family Foundation, Inc.  
Adolph and Ruth Schnurmacher Foundation, Inc.  
Mr. Gil Schwartz  
Mr. Mark J. Settembre  
Ms. Lisa E. Sherman  
Mr. Mark S. Brashear and Mr. James A. Shreve  
The Ted Snowdon Foundation  
Mr. Michael Soh  
Sparks Custom Retail, LLC  
David Stark Design and Production  
Estate of Alton J. Stilson  
Stone Source  
Mr. Jay Scott Sugarman and Ms. Kelly Behun  
Tarshis Family Foundation  
Mr. Jonathan M. and Mrs. Lizzie Tisch  
Ms. Blaine Trump and Mr. Steven C. Simon  
Ms. Tamara R. Tunie  
The Vidda Foundation  
Ms. Sylvia Vogelman  
The Wallace Foundation

Ms. Vera Wang  
Ms. Virginia Weiss  
H.M. Witt & Co.  
Mr. Vicente Wolf  
Mr. and Mrs. William Wolff

## Patron

**\$5,000+**

Alpern Family Foundation, Inc.  
American Luxury PTE LTD  
Apax Partners L.P.  
Architectural Digest  
Association of Legal Administrators, New York City Chapter  
Mr. and Mrs. Dugald Euan Baird  
Mr. and Mrs. Eugene P. Beard  
Mr. Erich R. Bechtel  
Mr. Paul Beirne  
Mr. Richard Bindler  
Mr. Frank Borsas  
Mr. Geoffrey N. Bradfield  
Mr. Sheldon Brody  
Mr. Robert M. Browne  
C3 Architecture + Design, PC  
Canard Inc.  
Carlson Family Foundation  
Mr. Lawrence N. Chanen and Mr. Jack Burkhalter  
Mr. Timothy Y. Chow  
Mr. and Mrs. Eric Chu  
Mr. Robert S. Coburn and Mr. Averitt Buttry  
Dr. David Colbert  
Corinthian International Foundation  
Mr. Jack deLashmet  
Deutsche Bank  
Diversified Distribution Systems, LLC  
Gaylord Donnelley Charitable Trust  
Mr. Michael I. Eberstadt and Ms. Nina Beattie  
Emmanuel Baptist Church in Brooklyn

Estate of Charlotte Tota-Pena  
Mr. Jose Pepe Fanjul  
Fleetwood Fixtures  
Florida Crystals Corporation  
Mr. Sandy Gallin  
Gilead Sciences, Inc.  
Mr. Frank K. Godchaux  
Mr. and Mrs. Michael Goodstein  
Greenwich Honda  
Grubman, Indursky, Schindler & Goodstein  
I. Halper Paper & Supplies, Inc.  
Health Plus, an Amerigroup Company  
Drue Heinz Trust  
Mr. Jim Hoffman and Mr. Doron Sabag  
Hollis Stern Charitable Fund  
Mr. and Mrs. Jerry Hsieh  
Icon Design LLC  
Mrs. Julie Schoenberg Jacobs  
JustGive  
Mr. Joseph F. and Mrs. Laureen E. Kirk  
La Perla Fashions, North America, Inc.  
Dorothea Leonhardt Fund of Communities Foundation of Texas  
Mr. John F. Levis  
Ms. Blake Lively  
MacDonald-Peterson Foundation  
Mr. Joseph Gerald Madigan and Mr. Richard J. Pipia, Jr.  
Manatt, Phelps & Phillips, LLP  
Mr. John F. Megrue, Jr.  
Mr. Richard and Mrs. Marcia Mishaan  
Dr. Diana M. Moore  
Mr. Andrew L. Morse  
Mr. Mark Moskowitz  
Mr. Nicholas and Mrs. Maryann Kavalieratos  
Mr. Nathan Orsman and Mr. Jose Castro  
Mr. Christopher D. Phillips

Mr. Neal Rosenberg  
Daryl & Steven Roth Foundation  
Mrs. Janet Kane Scapin  
Charles and Mildred Schnurmacher Foundation, Inc.  
Ms. Barbara Schoenberg  
Mr. Scott Schramm  
Mr. Evan D. Schwartz and Mr. Robert K. Fitterman  
Mr. Frank M. Shanbacher and Mr. Bruce Klingler  
Mr. Chris Simon  
Mr. and Mrs. Howard Solomon  
Mr. Brian M. Sondey and Ms. Lesley O. Sondey  
Mr. Jeffrey Evan Taback and Ms. Inanna H. Donnelley  
Mr. Thomas A. Teeple  
James S. and Merryl H. Tisch Philanthropic Fund  
Mr. Joseph Paul Ujobai and Mr. Eduardo Ardiles  
Mr. and Mrs. Barry F. Weissler  
Mr. C. Julian Williams  
Ms. Bunny Williams  
Mr. Paul George Wilmot  
Mr. Sheridan Wright and Mr. Perry Wolfman  
Mr. Peter Wunsch

## Supporter

**\$2,500+**

Acura of Bedford Hills  
Mr. Matthew R. Ailey  
Mr. and Mrs. Tim Armstrong  
Mrs. Nancy Adelson  
Antiquarium, Ltd.  
Mr. Edward W. Barnes  
Mr. Thomas W. Barritt  
Mr. Dennis Basso and Mr. Michael A. Cominotto  
Mr. Peter G. Beck  
Mr. Ryan William Bell  
Mr. Raymond T. Benack  
Mr. Michael Bennett

BICOM NY, LLC  
Stanley and Joyce Black Family Foundation  
The John N. Blackman Sr. Foundation  
Ms. Candy Bonder  
Ms. Jennifer L. Brorsen and Mr. Richard M. DeMartini  
Mr. Philippe Brugère-Trélat and Mr. Mitchell Draizin  
Bruce and Melissa Fischer Family Foundation Trust  
C.A.L. Foundation, Inc.  
Mrs. Louise Camuto  
Mr. William Candelaria and Mr. Gilford Robinson  
Carl Byrd & Co.  
Mr. James G. Caradine  
Carolina Herrera LTD  
Charitybuzz  
Ms. Valerie Coster and Ms. Karen Simon  
Mr. Joseph Covelli and Mr. William Lucia  
Mr. Billy and Mrs. Janice Crystal  
Ms. Teresa M. Cunningham  
Ms. Mary Ann Czarcinski  
Custom Media Environments  
Cynthia and Herbert Fields Fund  
DaVita Total Renal Care, Inc.  
Mr. John Della Badia, M.D.  
Ms. Florence L. de Lavalette  
DeMartini Family Foundation  
Dentons US LLP  
Departures  
Mrs. Hester Diamond  
Dodger Properties LLC  
Mr. Donald F. Donovan and Ms. Jennifer Lake  
Mr. Daniel Ennis  
Ms. Kathryn Fee  
Mr. Christopher Fiore  
Mr. and Mrs. Bruce Fischer  
Mr. Terry Fitzpatrick  
Mr. Gary B. and Ms. Svitlana Flom  
Ms. Miriam Fond

Fosdick Fund of The New York Community Trust  
Mr. Gerald Frankel  
Google  
Mr. Howard L. Grier and Mr. Anton Dudley  
Mrs. Louise Grunwald  
Ms. Linda A. Harris  
Mr. Richard Bryan Hodos  
Dr. Bruce C. Horten and Mr. Aaron S. Lieber  
Hamptons Design House LLC  
Mr. and Mrs. J. Roy Helland  
Mr. and Mrs. Paul J. Hooker  
Mr. Steven Horn and Mr. Trent M. Huffman  
InStyle Magazine  
International Business Machines Corp  
The Jaffe Family Foundation  
Ms. Elise Jaffe and Mr. Jeffrey Brown  
Ms. Amanda Jankelovics  
Mr. Robert P. Jepsen and Mr. Dean T. Lewallen  
Mr. Barry Kaplan  
Ms. Donna Karan  
Mr. Stephen Kennard  
Ms. Sueanne Kim  
Lambert Family Foundation  
The Lanmar Fund  
Mr. Joseph and Mrs. Mary P. Landy  
Landy Family Foundation  
Mr. Bill G. Lambert  
Mr. David C. Ludwigson and Mr. LaMont W. Craig  
Mr. Eric C. Landgraf  
Ms. Joanne Lavin  
Mr. Alan G. Levin and Mr. C. John Burger  
Levi Strauss Foundation  
Little Bear Inc.  
Loeb Partners Corporation  
Manhattan Chamber of Commerce  
Grace R. and Alan D. Marcus Foundation  
The Marino Organization

Ms. Laura Michalchyshyn  
Ms. Frances Milberg  
MBLM Productions, LLC  
Mellam Family Foundation  
Merchandise Mart Properties, Inc.  
Mr. Henry and Mrs. Helene and Morrison  
Ms. Ginalisa Monterroso  
Ms. Cindy Ellen Nelson  
Network for Good  
New York City Gives  
Mr. George Nunno  
Mr. Paul J. O'Sullivan  
Paddle8 Inc.  
Mr. and Mrs. Steven C. Parrish  
The Paul and Margo Charitable Fund  
Paypal Giving Fund  
Ms. Patricia A. Poglinco and Mr. Geoffrey E. Stein  
Mr. Christopher S. Poore  
Mr. Steven Andrew Rank  
Red Thread Good Coffee  
Mr. Joel C. Readence  
Mr. and Mrs. Stanford Reinisch  
Runnymede Foundation  
Mr. Richard Santiago  
Mr. Jeffrey B. Soref and Mr. Paul Lombardi  
Mr. Joseph P. Stafiniak  
Ms. Lynda Sylvester  
Spark Directed Fund  
Helen Schlaffer Foundation Trust  
Mr. and Mrs. Robert L. Stine  
Sylvester & Co. Retail, Inc.  
Mr. Marc and Ms. Sharon Teitelbaum  
Milton Tenenbaum Charitable Foundation  
Teeple Charitable Fund of The Greater Alliance Foundation  
Tillotson Design Associates  
Mr. James J. Treacy  
Two One Two Design

United Way of New York City  
Mr. Daniel L. Wallace  
Water Mill Foundation  
Mr. Bruce Weber and Ms. Nan Bush  
Ms. Nancy L. Wender and Mr. Steven J. Rand  
The West Family Charitable Fund  
The William Fund  
Mr. Lance C. Williams  
Mr. Rod Winterrowd  
WEtv LLC  
Mr. Steven S. Yee and Mr. Erich Theophile

## Friend

**\$1,000+**

Ms. Angela Ahrendts  
Ahrendts-Couch Foundation  
Ms. Theresa M. Alexander  
Mr. Kenneth Alpert and Mr. Michael Stern  
Mr. Robert L. Amdur  
American Airlines  
The Harriet Ames Charitable Trust  
Ms. Marianne Andreach  
Mr. Lewis Apito, Jr.  
Mr. Stuart S. Applebaum  
Mr. Alexander Apsis  
Ms. Marisa Arango  
Aretsky's Patroon  
Ms. Christine B. Austria  
Aviva Spring Foundation  
Bacon Construction Company  
Ms. Maria Bahena  
Mr. Thomas R. Baird  
Ms. Anna Jain Bakst  
Ms. Jennifer Balbier  
Mr. David Baldacci  
Mr. Paris R. Baldacci and Mr. Andrew S. Dolkart  
Bank Leumi USA  
Mr. Robert M. Bardin and Mr. Robert Palomo  
Bardin Palomo Ltd.

Ms. Deborah L. Barlow	Ms. Barbara Murphy Bryant	Daffy's Foundation, Inc.	Fifth Generation Inc.	Mr. Bruce Gordon and Ms. Tawana Tibbs	Mr. and Mrs. Stephen A. Howard	Ms. Marsha Koppel
Mr. Daniel Barney	Mr. Mario Buatta	Ms. Pamela J. Damsky	Mr. Richard A. Fink	Gordon Family Charitable Foundation	Mr. Faris Howat	Mr. Anthony D. Korner
Ms. Victoria Bartelle	Buggs and Rudy Discount Corporation	Ms. Bette J. Davis	First Presbyterian Church	Mr. Daniel Goss and Mr. James Gurney	Mr. and Mrs. Henry H. Hoyt, Jr.	Mr. and Mrs. Stephen J. Krass
Ms. Dina M. Battipaglia	Mr. Clifton P. Bullard	DaVita Jersey City Dialysis	Mr. and Mrs. Brian Fisher	Mr. Marc Gourevitch	Ms. Emily S. Hughes	Mr. James L. LaForce and Mr. Stephen Henderson
The Howard Bayne Fund	Mr. Roger W. Bunn	Ms. Elaine DeBari	Mr. and Mrs. Ken Flam	Hunter College Elementary School	Mr. and Mrs. Richard P. LaGravenese	Mr. Thomas R. Lalla, Jr.
BCM Architectural	Mr. Ron S. Burman	Ms. Eileen M. DiBenedetto	John J. Flemm Foundation, Inc.	Ms. Norma Grant	Ms. Deborah B. Landesman and Mr. Rocco Landesman	Ms. Patricia Landy-Rivas
Mr. Alexander Bea	Ms. Karen Burman	Mr. Brian Scott Deleu and Mr. Claudio Villa	Mr. Jeff Flug	Mr. Robert M. Grass	Ms. Alice Jacobs	Mr. James Larkin
Mr. Willard Beckham	Burgess Family Charitable Fund	Helen and Philip Delman Foundation	Mr. and Mrs. Howard Fluhr	Ms. Marcy Ashley Gray	Jeffery Jacques, M.D. and Madhavi Vemireddy, M.D.	Estate of Lenore Latimer
Mr. Gregory Ralph Belcamino	Mr. Gary W. Brusseau	Mr. Donato DeMarinis	Ms. Mary N. Fong	Mr. Nick Grbac	Mr. Judith Jederlinic	Ms. Susan LaTorre
Ms. Robin F. Beningson and Mr. Salvatore Yannotti	Mr. Joseph R. Buthorn	Mr. and Mrs. William DeSeta	Mr. Arthur Foresta and Ms. Alina Alvarez	Mr. ulrich Grimm	Mr. and Mrs. Michael A. Jenkins	Mr. Daniel Law
Mr. Michael D. Bennett and Mr. Juan Battle	Mr. and Mrs. J. Victor Cain	William and Donna DeSeta Charitable Foundation	Mrs. Daria L. Foster	Ms. Alexis B. Hafken	Johnson & Johnson Family of Companies	Lawrence Family Trust
Mr. Max W. Berger	Mr. Stephen Calk	Mr. David Desocio	Mr. James D. Fox	Joseph L. Halbach, M.D.	Mr. Bob P. Jones	Mr. Larry J. Lawrence
Ms. Susanna T. Bergtold	Mr. Chris Camarda	Ms. Randy J. Deutsch	Mr. Bryan Frank	Mr. Russell S. Halley	Mr. Warren Jones	Ms. Sandra Lynn Lazo and Mr. Donald H. Layton
Mr. Mitchell Berkey	Mr. Castle B. Campbell	Mr. and Mrs. Harry B. DeVerte, Jr.	Mr. Peter C. Freeman	Mr. Peter L. Hallock and Mr. Craig P. Mowry	Mr. John Harold Kander and Mr. Lawrence Alpert	Mr. and Mrs. Gregory Lee
Ms. Dayle Berke	Cantor Fitzgerald Relief Fund	Ms. Jessica Diehl	Mr. Richard L. Freundlich	Ms. Dena Hammerstein	Ms. Marjorie Kaplan	Mr. Jeffrey Leimsider
Ms. Patricia Berkule	The Richard E. Capri Foundation	Mr. William M. DiMichele	Freundlich Family Fund of the Jewish Federation of Greater Philadelphia	Ms. Sandy Hanlon-Cressler	Mr. and Mrs. Gary M. Karlitz	Ms. Laura Lentini
Ms. Gabrielle Bernstein	Mr. Ron Carlivati	Christian Dior	Mr. David A. Fricke	Mr. Robert C. Happy, Jr.	Ms. Jennifer Lee Kass	Mr. Richard H. Lerner
Ms. Kathy Fein Bierman	Mr. Brian T. Carty	Ms. Meredith Lynne Doll	Ms. Veronique Gabai-Pinsky	Mr. Andre Haroche	Ms. Judith F. Kaufer	Mr. Charles W. Leslie
Dr. David Biro and Ms. Daniella Vitale	Mrs. Margaret Ameer Cataldo	Mr. Robert Dowling	Tushna Gamadia, Esq.	Mr. Mason Drew Haupt	Mr. Thomas P. Kazmark	Mr. and Mrs. David Todd Levine
Mr. Alexis Bittar	Ms. Sarah L. Challinor	Mr. Kenneth J. Downing	Mr. John C. Gast	Ms. Carrie Havel	Ms. Linda Keithan-Fein	Mr. David A. Levine
Alexis Bittar Inc.	Chasin/Gilden Family Fund	Mr. Martin Dresner and Mr. Mark Davis	Richard J. Gerrig	Ms. Madison Headrick	Mrs. Ann Kelman	Ms. Amy Levinson
Ms. Suzy Biszantz	Dr. Harvey J. Chasser	Mr. James H. Duffy	Mr. Kevin Gerrity	Hearst Corporation	Mr. and Mrs. Thomas L. Kempner	Mrs. Dorothy Lichtenstein
Mark and Deborah Blackman Charitable Trust	Mr. Lloyd W. Cheu and Dr. Douglas N. Mintz	Ms. Kimberly Eads	Mr. William Getreuer	Mr. Nicholas Hecker	Mr. Christopher P. Kennedy	Mr. Khoon-Min Lim
Mr. and Mrs. Mark W. Blackman	Mr. David Ciano	Ms. Katherine M. Edwards	Mr. Robert S. Gildedder	Ms. Deborah Heimowitz and Mr. Dan Heimowitz	Denis J. Keohane, M.D.	Fay J. Lindner Foundation
Ms. Betsy M. Blattmachr	Ms. Carla Cinganelli	Mr. David and Mrs. Stephanie Eisenberg	Mr. and Mrs. Ron V. Gillespie	Ms. Patricia Marie Heinz	Mr. and Mrs. Peter M. Kern	Estate of Betty S. Lipton
Mr. Max Blauner	Mr. Edward R. Clark	Mr. and Mrs. Harold Elish	Mr. Mark H. Gilman	Mr. Joseph P. Henchey	Ms. Judy Kinberg	Ms. Barbara Z. Locker
Mr. and Mrs. Jaryn Bloom	Mr. Jonathan Stephen Clark	Mr. Jeffrey Ellsworth	The Honorable Mr. and Mrs. Rudolph W. Giuliani	Mr. Robert A. Herbert	Estate of Rioghan M. Kirchner	Mr. Alan Lubliner
Ms. Laurie E. Bloomfield and Mr. Jay Bloomfield	Mr. Paul D. Clark	Ms. Gizella Engel	Mr. Thomas A. Gladwell	Mr. Almiro Hermes	Mr. Barry W. Kissane	Mr. Jeremiah Lucey and Mr. Richard Rosan
BMF Media	Mr. Cuthbert Leslie Coerbell	Mr. Paul Engler	Ms. Nicola P. Glass	Mr. Mark Herr	Mr. Raymond Klausen and Mr. John Harrington	Mr. and Mrs. Edward J. Ludwig
Mr. A.J. Bocchino and Ms. Phoebe Washburn	Mr. Matthew Coffin and Ms. Natasha Esch	Ms. Rachel Rutherford Englund	Mr. Adam B. Glassman	Mr. and Mrs. Jeffrey D. Hochberg	Mr. Gary Kleinau	Mr. Richard Lussier
Borax Paper Products, Inc.	Columbia university	Ms. Laura Essey	Mr. John Gnerre	Mr. Peter Hochschild	Mr. David Kleinberg	Ms. Edie Lutnick
Mr. John Bossard	Commonwealth Cares Fund Inc.	Fabric Traditions	Ms. Lesley E. Goldberg	Mr. Thomas A. Hoffer	David Kleinberg Design Associates	Ms. Diana Lyne and Mr. Ken Aretsky
Ms. Donna Bowers	Mr. Bob Conley	The Fanwood Foundation	Mr. Jonathan Goldblatt	Ms. Ruth Hoffman	Mr. Stephen Knoll	Ms. Susan Lyne
Briggs Family Fund	Ms. Carol L. Cooper	Mr. William H. Farmer	Mr. and Mrs. John A. Golden	Mr. Bruce M. Holley	Ms. Palma Kolansky	Mr. Anthony Lyons and Mr. Michael Cummins
Mr. David Brixton	Corymore Foundation	Mr. Joe Feczko	Mr. Michael D. Golden	Ms. Winnie Holzman and Mr. Paul Dooley	Mr. Jim Konetsky	Ms. Karen MacLeod
Ms. Ernestina Brizuela	Ms. Cynthia J. Cox	Fein Foundation	Mr. and Mrs. Craig D. Goldman	Mr. Steven Hoose	Mr. John C. Kopchik	
Brooklyn Community Foundation	Mr. Jeffrey Cranor	Ms. Kim Ferrarie	Mr. Kathleen M. Goldpaugh	Mr. and Mrs. Craig M. Horowitz		
Ms. Diane Harris Brown	Ms. Diana Crawford	Mr. William S. Fielding	Mr. Alan Golub and Ms. Irka Golub	Stephen A. & Joan R. Howard Fund		
Barbara Bryant Family Foundation	Creative Artists Agency	Mr. and Mrs. Herbert Fields	Ms. Erica Gonzalez			

Mr. and Mrs. Gerald Maher, Sr. Mr. Arthur Mahon Ms. Nancy B. Mahon and Ms. Susan Trerotola Ms. McKenzie Lee Mahoney-Roman and Mr. David H. Roman Mr. John J. Mackerey Ms. Durga Mallampalli Mr. James Edward Maloney The Mandel Foundation Susan K. Manning, Ph.D. Herman Marak Trust Ms. Marina E. Marcoux Mr. Kenneth A. Margolis Dr. Martin Markowitz Mr. Kevin Mathis William D. Matuoizzi, M.D. and Mrs. Heidi Matuoizzi Mr. and Mrs. Adam Max Ms. Valerie A. McCarthy and Mr. G. P. McCarthy Mr. Richard V. McCune Mr. Chris McGrath Ms. LeAnn McLean Mr. and Mrs. Mark Meadow Medical Dynamics Mr. Martin Medina William M. & Miriam F. Meehan Foundation, Inc. Mrs. Ann K. Mellman and Mr. Benjamin Mellman Mr. and Mrs. Harry Mervish Metzger-Price Fund, Inc. Mr. Daniel Meyer The Brad and Nancy Meyers Family Fund at Schwab Charitable Fund Mr. Elazar Milbaur Mr. Yossi Milo Mr. Albert S. Mishaan Ms. Jean Mitchell Alexandre A. Montagu, Esq. Moody's Investors Service, Inc.	Mr. Brian S. Moore and Mr. Joseph Salzano Mr. and Mrs. Jeffrey Moskin Mr. Larry Moss Mount Kisco Honda Mr. Robert Muller Mr. David Murphy Ms. Mary Engelman Murphy The Murphy Family Foundation Mr. John Murr Mr. Kirk Myers Dr. Paul Nathan and Mr. Mark M. Sibley- Schreiber Mr. and Mrs. James L. Nederlander The C.E. Nelson Charitable Fund The New York Gay Pool League, Inc. Ms. Esther Newberg Mr. and Mrs. Gary M. Nielsen Ninth Avenue Association of New York Mr. Benjamin Noriega-Ortiz The North Star Fund NYU Community Fund Mr. Scott David Oaks Mr. and Mrs. Fred M. Oberstein Ms. Mary O'Connell Ms. Dianne E. O'Donnell Mrs. Maureen O'Leary Mr. John O'Neil ONYX NY Northeast Ms. Carlyn Oppedisano The Overbrook Foundation Mr. and Mrs. Michael Palatnek Mr. John L. Panarace Mr. and Mrs. Jon F. Paton Mr. Brad Peltz Mr. Robert M. Pennoyer	Mr. Joseph R. Perella and Ms. Amy Perella Mr. Steven Perley Mr. Michael Joseph Perricone The Philanthropic Fund The Irving & Constance Phillips Charitable Fund Ms. Constance Phillips Phillips-Van Heusen Corporation PIMCO Foundation Ms. Carole S. Pittelman Ms. Ellianna Placas Mr. Douglas Polley Mr. Terry B. Porter Posner-Wallace Foundation Ms. Cynthia E. Potter Mr. Ron B. Prince Prince in New York Music Corporation Public Relations Society of America - Cincinnati Chapter Ms. Laura A. Quinn Ms. Robin Quivers QVC Employees Mr. William R. Reader in Memory of Lester Bowman Ms. Carolyn Reece Ms. Angela M. Reed Ms. Roberta J. Reed Ms. Lori A. Reinhard Dale Reiss and Jerome King Account, Ernst & Young Foundation Ms. Dale Anne Reiss and Mr. Jerome King Mr. David Richman and Ms. Elizabeth Sultan Risafi Wheeler Fund Ms. Bonnie G. Robins Ms. Marie Robinson Mr. Russell Rodriguez Ms. Alicia Rodriguez- Guerra	Mr. Benjamin G. Rosenblum and Ms. Deborah Berkman Ms. Aimee D. Ross and Mr. David Ross Estate of Theresa Rothbard Mr. Robert L. Royall, II Mr. and Mrs. George Rubin Ms. Marina M. Rust Paul Sabbatini, M.D. Salesforce Foundation Ms. Susan Salice Ms. Caroline Samuels and Mr. Michael Sturmer Ms. Carol Saper The Lawrence and Carol Saper Foundation, Inc. Sarah Silver Photography Inc. Mr. Heath Schoengold Mr. Eric H. Schultz Dr. David J. Schwartz Ms. Lisa Schwartz Ms. Judy O. Segal Ms. Vicky Schade Hyman R. & Ruth Shapiro Foundation, Inc. Ms. Ruth Shapiro Mrs. Angela L. Shaw Mr. and Mrs. David Sherman Mr. Johnathan M. Sherman Mr. Gil Shiva Susan Stein Shiva Foundation Ms. Peggy Jane Siegal Mr. Michael Bruce Siegel Mr. Keith Singer Mr. Stephen E. Smith Mr. Matthew Patrick Smyth Ms. Shannon D. Snead Mr. and Mrs. Mitchell C. Sockett Mr. Stephen Sondheim Mr. Steven V. Sousa Mr. Christopher Spano Ms. Anne-Katrin Spiess Mr. Laurence C. Srebrenick	Ms. Lesley R. Stahl Stamford Subaru LLC Mr. Russell E. Steele Mr. and Mrs. Richard P. Steinberg Mr. Dean K. Stein and Mr. Curt B. Sharp Mr. and Mrs. Mark E. Stephanz Mr. and Mrs. Leonard N. Stern The Allison Maher Stern Foundation Mr. B. Kevin Sterns Mr. David Stetson Stonehill College Ms. Robin V. Strasser Timothy P. Sullivan Charitable Lead Trust Mrs. Margaret A. Sweeney Mr. and Mrs. Joseph V. Taranto Mr. Vincenzo Taravella Ms. Colette N. Thaw The Saint Paul Foundation Ms. Alyce P. Thomas Mr. Paul E. Thomason Mr. James F. Tighe and Ms. Barbara Rentler Ms. Vickie A. Tillman Mr. Michael P. Timmes Ms. Anne Tishkoff Mr. Andrew P. Tobias Andrew Tobias Fund Mr. John Torres Mr. Adam Townsend Mr. Glynn D. Turner Union Square Optical, Inc. United Way of Northern New Jersey Mr. Richard R. Upton and Mr. Josef M. Gonzalez Mr. Marcello Vaccaro Mr. Jeffrey A. Valenson Mr. Gregg Oded Verbin	Verizon Foundation Vital Habitats, Inc. Mr. Salvatore Vitaliti VW Home, Inc. Ms. Claudia Wagner Mr. Mal F. Ward Paula Wardynski Charitable Fund Ms. Paula Wardynski Nawarart Watanasuparp Mr. Todd Waterbury Wear Me Out Jewelry, Inc. Ms. Sigourney Weaver Mr. Pete Webb and Mr. Eric Blomquist Marla Weinhoff Studio LLC Ms. Marla Sue Weinhoff Ms. Lois L. Weinroth Ms. Katherine G. Weinstein Ms. Aviva L. Weintraub and Mr. Gordon A. Tapper Ms. Andrea W. Weinzimmer Mr. Melvyn Weiss Mr. Michael Weiss Mr. Anthony C. Wells Western Services Inc. Mr. Peter T. Wheeler Mr. Steven Wheeler Mr. Samuel Wiener Ms. Deborah E. Wiley Mr. Ryan Williams Mr. Peter S. Wilson Francine and Herbert Wilson Fund Mr. and Mrs. Herbert L. Wilson Ms. Marillyn B. Wilson Wilson R.M.S. The Winfield Foundation Ms. Glenda Winter-Irving Mr. and Mrs. Edward L. Wolf Mr. Kenneth A. Wright Ms. Anne Young	Ms. Katherine B. Young and Mr. William P. Young Mr. Paul P. Zakris Mrs. Kathleen A. Zammit and Mr. Victor J. Zammit Mrs. Judy Francis Zankel Ms. Barbara Mounsey Zeins Mr. Kenneth S. Ziman Mr. and Mrs. David Zimmerman
--	--	--	--	--	---	---

## Bequests

Helen Fried  
Renee Getler  
Rioghan Kirchner  
Lenore Latimer  
Frank Maira  
Herman Marak Trust  
Harry Mervish  
Melvin Polisher  
Theresa Rothbard  
Alton J. Stilson  
Timoth P. Sullivan  
Charitable Lead Trust  
Charlotte Tota-Pena  
Lois L. Weinroth

## Government

Hudson County Board of  
Chosen Freeholders /  
Hudson County Dept. of  
Human Services (Ryan  
White Part A)  
Manhattan Borough  
President (Scott Stringer)  
New York City Council  
(NYCDOHMH)  
New York City Council  
Members (NYCDOHMH)  
Member Maria del  
Carmen Arroyo  
Member Annibel Palma  
Member James Vacca  
Member Debi Rose  
United Way  
Emergency Food and

Shelter Program New  
York City Department  
of Mental Health and  
Hygiene/Public Health  
Solutions/HIV Care  
Services (Ryan White  
Part A)  
New York State Department  
of Health  
Hunger Prevention and  
Nutrition Assistance  
Program  
Emergency Food  
Assistance Grant

## Gifts In Kind

Barawine LLC  
Cheri Restaurant  
Gregory de la Haba  
Fourth Wall Restaurants  
The Lion Restaurant  
Marcus Samuelsson Group  
Andrew Edlin Gallery  
Arte del Pueblo  
Galerie Bonheur  
J. Compton Gallery  
Kent Fine Art, LLC  
Margaret Russell

## Corporate Volunteers

Ad Council  
Adecon  
Alcoa  
AM WINS  
American Express  
AOL  
APG  
AppNexus  
Athleta  
Automotive Mastermind  
AXA Equitable  
Ballet Jewels  
Banana Republic

Bank of America  
Bloomberg  
Bloomingdale's  
BloomReach  
BMF Media  
BNP Paribas  
Bonobos  
Boston Consulting Group  
Broadridge  
Brown Brothers Harriman  
Burberry  
Calvin Klein  
CAPCO  
Catalyst Investors  
CBS  
Cerberus Capital  
Cervello  
Citi  
Clearbridge Compensation  
Group  
Corbis  
Deutsche Bank  
Digiday  
Dolce Vita  
Douglas Elliman  
DTCC  
Edelman  
EMC  
Estee Lauder  
Express  
Financier Patisserie  
Ford  
Fossil  
Gap  
GLG  
Goldman Sachs  
Google  
GrubHub  
GSK  
Haddad Brands  
Hall Capital  
Hewlett Packard

Hilton Garden Inn  
Holland & Knight  
Horizon Media  
Humana  
iCrave  
InDemand  
Intradeco  
Invesco  
Jennifer Bett  
Communications  
Johnson & Johnson  
K&L Gates  
KA Designs  
Katz Television Media  
KBW  
Kelton  
KPMG  
L'Oreal  
Latham & Watkins  
Lexis Nexis  
Lilly  
Limited Brands  
Lloyd Group  
M&T Bank  
M·A·C Cosmetics  
Macy's  
Marc Jacobs  
Marsh & McLennan  
McGraw Hill  
Mercer  
MFA  
Michael Kors  
Momofuku  
Moody's  
Morgan Stanley  
MSKCC Surgical Day  
Hospital  
National Geographic  
National Grid  
NERA Economic  
Consulting  
NICE Actimize  
Observer Media

Old Navy  
Original Binding Productions  
Osbourne Associates  
OWN Energy  
Perella Weinberg Partners  
Pfizer  
PIMCO  
Piperlime  
Plated  
Point72  
Poy USA  
PureWow  
PWC  
Ralph Lauren  
RBC  
Ready Set Rocket  
RevTrax  
RICS  
Rockefeller Foundation  
Rue La La  
Salesforce  
SAP  
Shake Shack  
Sopexa  
Standard & Poors  
Standard Chartered Bank  
Starwood Hotels  
State Street  
Stribling and Associates  
Swarovski  
TD Bank  
The Nomad Hotel  
Thomson Reuters  
Tory Burch  
Twitter  
UBS  
USHG  
Warby Parker  
Watch What Happens Live  
WellCare  
Wells Fargo  
Winston Retail

Y&R  
Zurich American Insurance  
Company

## Board of Directors

### **Officers**

#### *Chairman*

Scott Bruckner

#### *Vice-Chairs*

Lisa Sherman

Blaine Trump

#### *Treasurer*

Mark Lanspa

#### *Secretary*

Michael Meagher

### **Directors**

Michael Anthony

Jon Bond

Mark Brashear

Jennifer Diamond

Jonah Disend

Linda Fairstein

Jon Gilman

Barbara Goodstein

Desiree Gruber

Joseph Kirk

Michael Kors

Mark Lehrer, Esq.

Gerald Madigan

Terrence Meck

Laura Michalchyshyn

Karen Naber

Jeff Pfeifle

Joan Rivers\*\*

Margaret Russell

Tamara Tunie

Paul Wilmot

## Chairman's Council

Richard E. Feldman, Esq.

Barbra Locker, Ph. D.

R. Michael Moran

Michael Sennott

Sylvia Vogelmann

## Leadership Council

Matthew R. Ailey

Susan Akkad

Jens Audenaert

Christopher Beacham

Joseph Dolce

Maryann Kavallieratos

Christopher S. Poore

Scott Reinhardt

Daniel Shea

David Stark

Greg Williamson

Katy Williamson

Sheridan Wright

## Executive Staff

Karen Pearl

*President & CEO*

Candy Bonder

*Chief of Staff*

David Ludwigson

*Chief Development Officer*

W. M. Kanyuck

*Chief Financial Officer*

\* Joined the Board in 2014

\*\* In Memoriam



YouTube

godslowwedeliver



@godslovenyc

CONNECT WITH US