

Food is Medicine. Food is Love.

Fiscal Year 2021 Annual Report

Contents

A Letter from Board Chair Terrence Meck and President & CEO Karen Pearl	2
Mission	3
Where We Serve	7
Meals, Miles, Doorbells	8
Who We Serve	9
Ten Things We're Proud of this Year	10
Remembering Ganga Stone	12
Celebrating 35 Years	13
Changing with the Tides and Responding to Crisis: COVID-19	14
Signature Events	15
Partnered Events.....	16
Our Volunteers.....	18
Saying Farewell to Chuck “The Baker” Piekarski	21
Our Clients.....	22
Financials	24
Ways to Give	25
Thank You to Our Supporters.....	26
Leadership.....	34



A Letter from Board Chair Terrence Meck and President & CEO Karen Pearl



Dear Community,

We are delighted to be here with you as we continue to celebrate our 35th anniversary. While God’s Love is marking this historic achievement, we are simultaneously facing the crisis of COVID-19.

God’s Love We Deliver has a long history of responding to crises. As an organization founded at the height of the AIDS pandemic, we served our neighbors who were frightened, dying and, so often, alone. For many of us, this time 35 years ago was a time of enormous anxiety.

When HIV/AIDS was transforming life in the City, we learned how to care for those who were isolated, and too sick to shop or cook for themselves.

As we faced the unknown crisis of COVID-19, I am proud to say that we have risen to the challenge: our team enrolled more than 4,700 individuals on to our program. We have created a new eligibility tool to ease the onboarding process. We have introduced a new 4-week menu to delight and nourish our clients, and more.

While our holiday season required COVID changes (socially distant deliveries, masks, and other safety protocols), I am proud to share that our clients were able to celebrate the holidays “in grand style” during the pandemic.

In November and December, our kitchen hummed with energy as our chefs and volunteers prepared nourishing meals made with love, including a traditional holiday meal at Thanksgiving and a Winter Feast in late December.

Our policy team has been hard at work building support for medically tailored meals (MTMs) serving people affected by life-altering illness – those who are also most at-risk when it comes to COVID.

Together with our peer organizations in the Food is Medicine Coalition, our national Accelerator Program is helping teach and mentor other food programs around the country as they develop new MTM programs to serve their communities.

The profound need for MTMs this past year has tested our team, and I am proud to report that we are now enrolling and serving more people than ever. This year, we will serve a record 10,000+ people affected by life-altering illness in the New York City area.

And despite continued challenge, God’s Love has been awarded our eighth consecutive four star rating by Charity Navigator. Less than 5% of the 1.5 million charities rated annually can claim this achievement recognizing commitment to accountability, transparency, and strong financial health. We applaud our team for their commitment to responsible management of our community’s resources while serving our clients.

While God’s Love has spent this past year focused on expanding our program to meet the ever-growing need, we have also been focused on our Diversity, Equity, Inclusion and



President & CEO Karen Pearl and Board Chair Terrence Meck

Accessibility efforts. We remain committed to accountability for ourselves while demanding changes in our systems that lead to equal access and justice.

The pandemic is not over yet. But regardless, the herbs on our roof and more volunteers circulating throughout our building offer moments of gratitude, renewal, and confidence that our wonderful city will rise from last year’s challenges. Thank you for your continued support!

All our best,

Karen and Terrence



Our Mission

The mission of God's Love We Deliver is to improve the health and well-being of men, women and children living with HIV/AIDS, cancer and other serious illnesses by alleviating hunger and malnutrition. We prepare and deliver nutritious, high-quality meals to people who, because of their illness, are unable to provide or prepare meals for themselves. We also provide illness-specific nutrition education and counseling to our clients, families, care providers and other service organizations. All of our services are provided free to clients without regard to income. God's Love We Deliver is a non-sectarian organization.



clockwise from top left: 'Food is Love' with Cook Denise Baily and Senior Sous Chef Ryan Simpson, our client Ingrid, driver Thomas Borges

Advocacy

God’s Love seeks to ensure that the medically tailored meal intervention is part of the continuum of healthcare, broadly accessible to those who need it, and always of the highest quality. Our research supports local, state, and national advocacy to bring medically tailored meals to the most vulnerable through innovative approaches. Food security does not start or end with receiving a meal; it is connected to a whole host of social circumstances, such as housing, access to care, and education.



Food is Medicine Coalition:

God’s Love We Deliver chairs the national Food is Medicine Coalition, an association of nonprofit medically tailored meal providers across the country that convene to:

- Provide a complete, evidence-based, medical food and nutrition intervention to critically and chronically ill people in their communities
- Advance public policy that supports access to medically tailored food and nutrition services for people with severe and/or chronic illnesses
- Promote research on the efficacy of food and nutrition services on health outcomes and cost of care



Nutrition



Individualized nutrition care sets us apart from other meal programs in New York City. Every client on our program works with a Registered Dietitian Nutritionist to make sure we design the custom meal program that best meets their specific medical and nutritional requirements. Clients have access to unlimited nutrition counseling as well as ongoing nutrition education. In partnership with our Kitchen team, our meals are individually tailored with the highest quality ingredients to ensure that our clients always receive optimal nutritional value.

From the development of our therapeutic, evidence-based menus made with the freshest ingredients to unlimited nutrition counseling for changing dietary needs, we see the power of food as medicine and understand the significance of proper nutrition.



Celebrations and Special Touches

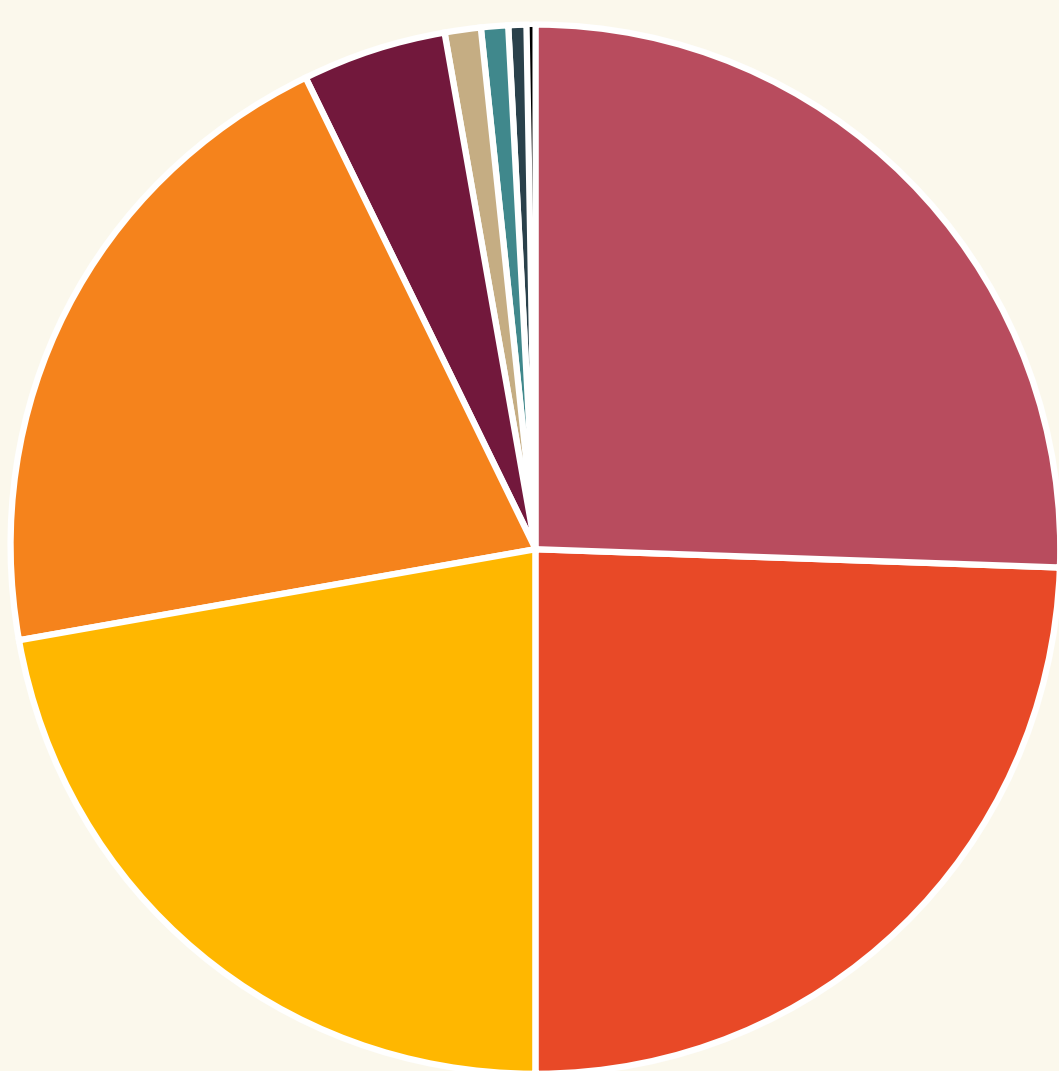
The health and well-being of our clients depend on more than just nutrition: they are improved by connection and joy. We provide a few special touches for our clients to deliver those, too!

To make the holiday season brighter for our clients we provide each client and their guest a special meal on Thanksgiving and again in late December. Because every birthday is worth celebrating, our tireless bakers bake and personalize a birthday cake for every client. Each cake comes with a card hand-crafted by volunteers—most often our “Young Hearts,” our youngest volunteers and philanthropists—with best wishes for their special day.



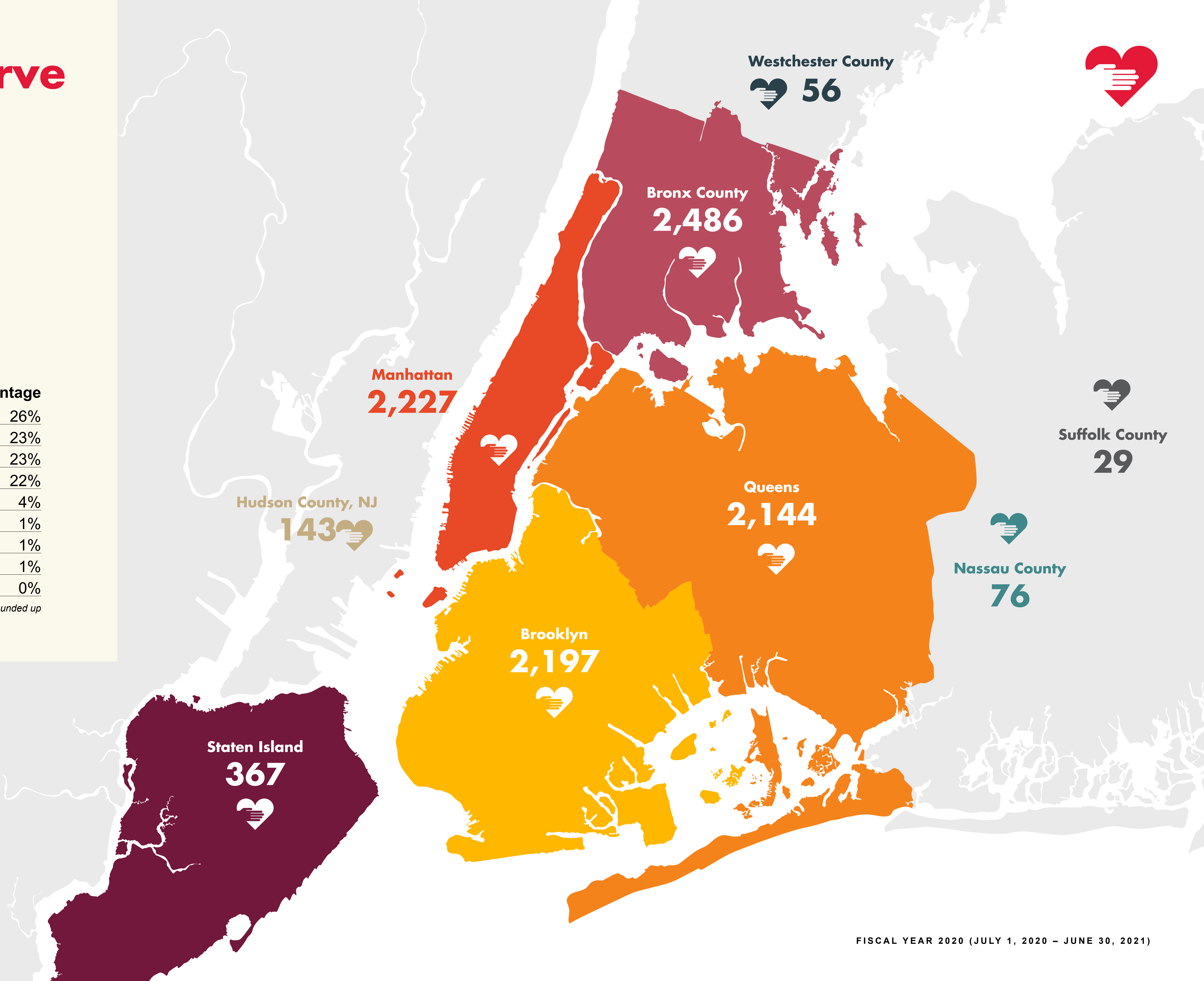
clockwise from top left: Thanksgiving meal delivery from Industry City, client Edith with her birthday cake for her 106th birthday, client Milagros with her Thanksgiving meal, Winter Feast meal packout with Terrence Meck, Lee Schrager, and Richard Jay-Alexander, our kitchen team on Thanksgiving.

Where We Serve



County	Individuals	Percentage
Bronx	2,486	26%
New York	2,227	23%
Kings	2,197	23%
Queens	2,144	22%
Staten Island	367	4%
Nassau County	76	1%
Hudson County, NJ	143	1%
Westchester County	56	1%
Suffolk County	29	0%

**percentages rounded up*



Meals, Miles, Doorbells



\$31,724,239



Revenue

2,452,416



Meals Cooked and
Delivered to all
Clients Inclusive of
Healthcare Clients

618,095



Meals Cooked and
Delivered to all
Healthcare Clients

230,000+



Miles Driven

10,300+



Meals prepared
and delivered
each weekday

22,000+



Donors Cultivated
and Thanked

47,000+



Gifts Processed

94,432



Followers on
social media

10,000



Thanksgiving
meals

9,671



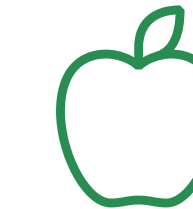
Individuals
Served Including
Healthcare Clients

8,000



Volunteers

5,305



Nutrition Counseling
Sessions

26



Vans on the road

200+



Diagnoses served

3,029



Healthcare Clients
Served

4,740



Individuals enrolled
(clients, children, and
senior caregivers)

25



Healthcare
Plans Contracted

23



Nutrition
Education Classes

5



Boroughs

3

Counties
We Ship to

1



County in New Jersey

1



Each Client Whose Life We Change

Who We Serve

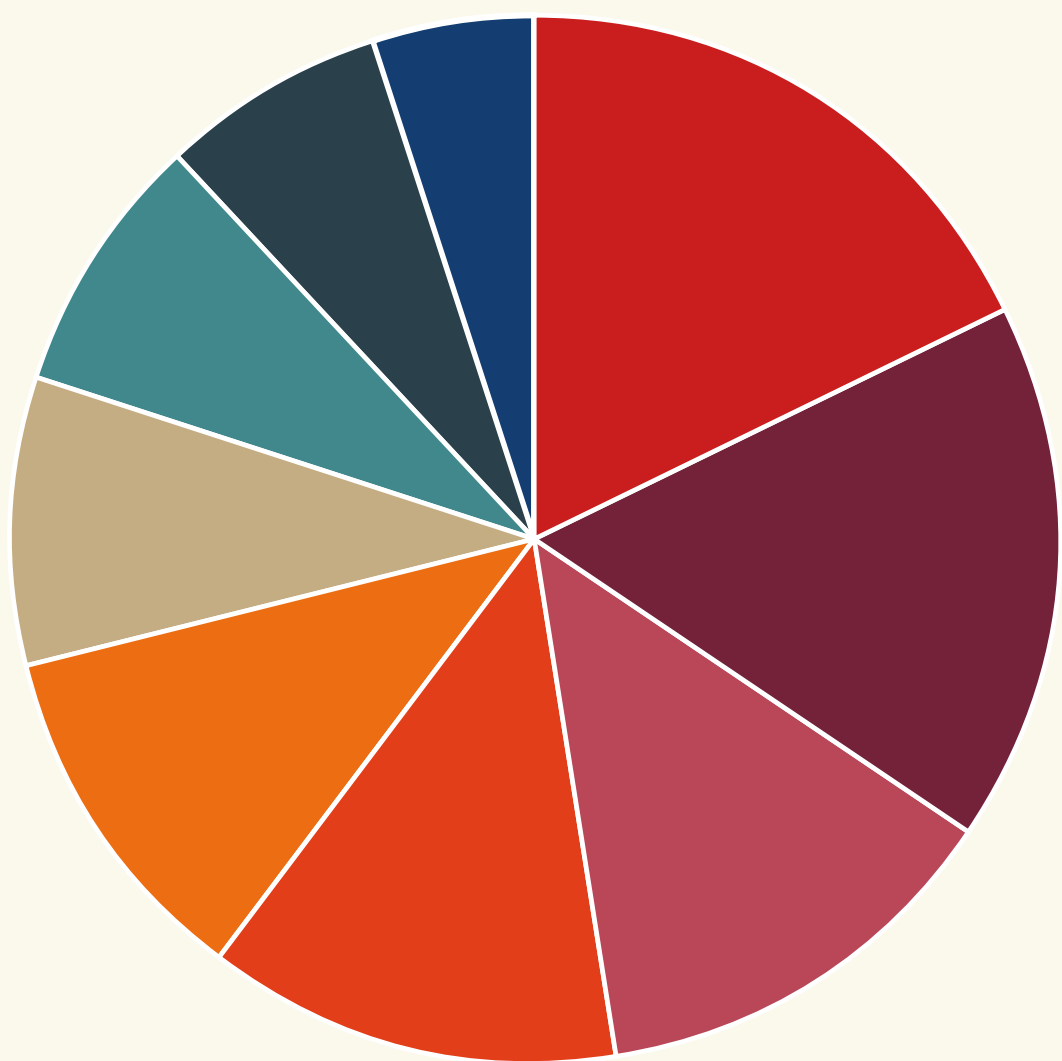


Clients
2,302,314 Meals
8,975 Clients

Children
57,574 Meals
282 Children

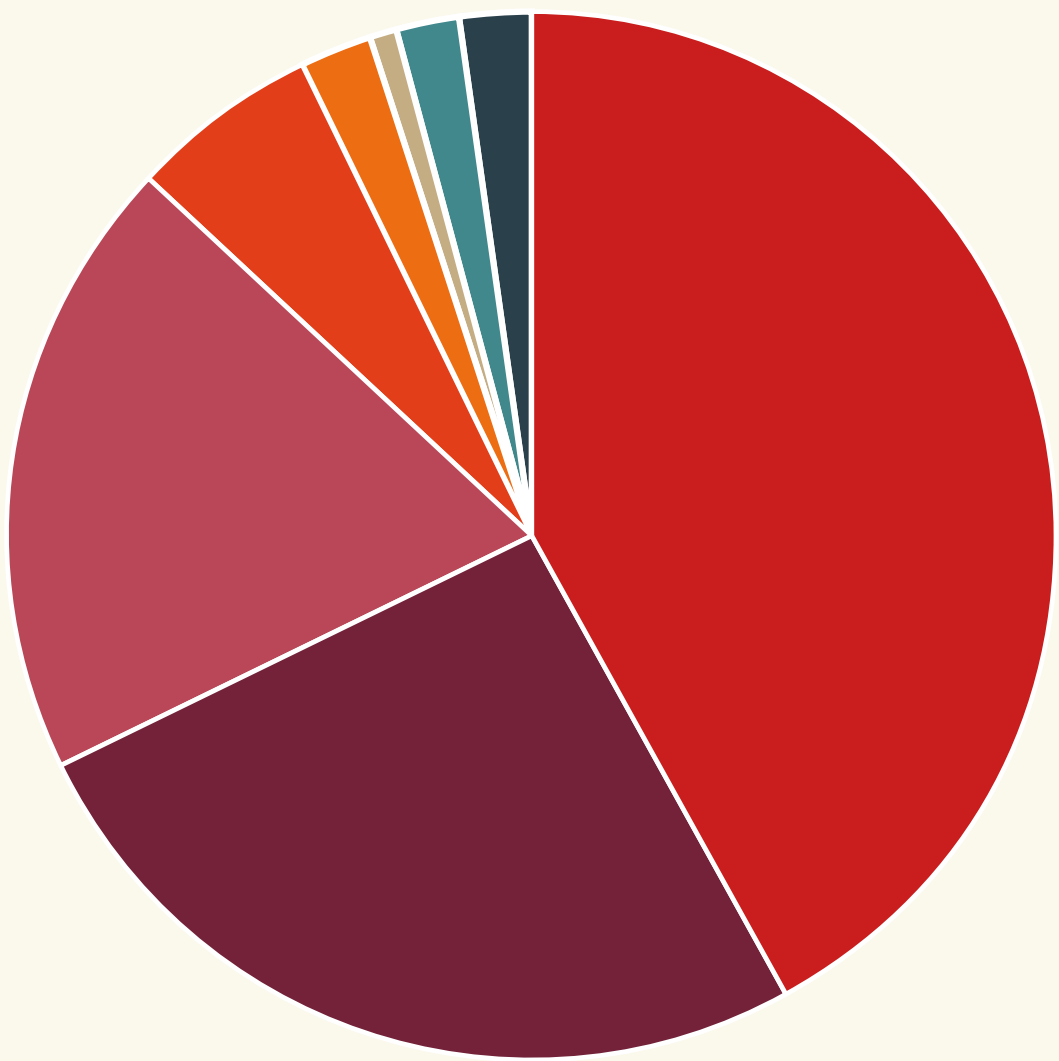
Caregivers
92,528 Meals
414 Caregivers

Total Individuals
2,452,416 Meals
9,671 Individuals



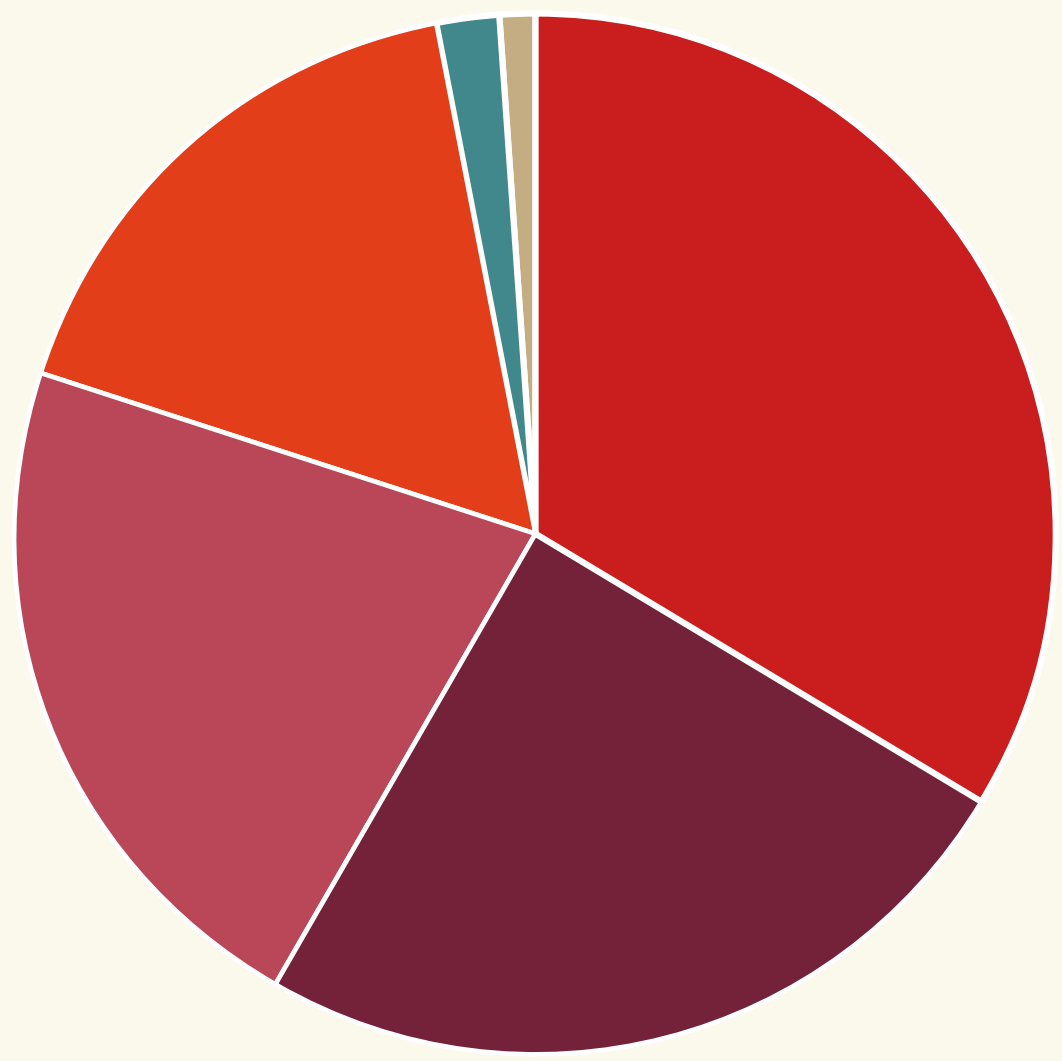
Diagnosis

Cardiovascular Disease	16%
Other Diseases	16%
HIV/AIDS	13%
Cancer	13%
Kidney Disease	11%
MS/Musculoskeletal	10%
Diabetes	9%
Alzheimer's/Neurological Dis.	7%
Pulmonary Disease	5%



Age

70+	47%
60-69	26%
50-59	16%
40-49	5%
30-39	2%
20-29	1%
13-19	2%
00-12	1%



Race/Ethnicity

	Percentage
Unknown/Unreported	42%
Black/African-American	18%
Hispanic	25%
White/Caucasian	13%
Asian/Pacific Islander	2%

Ten Things We're Proud of This Year



1 We successfully advocated for the introduction of a bill to increase access to medically tailored meals.

Alongside many other stalwart members of the Food is Medicine Coalition, God's Love supported H.R. 6774, a bipartisan bill to



create a Medicare pilot program to address the critical link between diet and the health of older adults. This proposal will ensure that medically and nutritionally vulnerable seniors get access to lifesaving medically tailored meals in their home.

2 We celebrated our 35th anniversary.

Since our founding in 1985, so much has changed for God's Love: we now serve to 200+ diagnoses, we have expanded our service range to Westchester, Nassau, and Suffolk Counties, and we've transformed our delivery model to a chilled/frozen one. But so much stays the same with our commitment to our clients. Our core values always remain the same: that our clients will never pay for their meals, that we'll deliver on the next delivery day, and that we'll never have a waiting list. We were honored to celebrate 35 years of healing and love through the power of food with our clients, volunteers, staff, and community.

3 We collaborated with Amida Care to create In Lieu of Services Program, the first of its kind in the state.

Amida Care is New York's largest nonprofit Medicaid Special Needs Health Plan, this partnership enables their members to receive medically tailored meals delivered with love. Dependable access to nutritious food will decrease stress—proven to exacerbate conditions and require more costly and invasive care measures. This program is the first of its kind in the state to provide medically tailored meals.

4 We launched our Culinary Council.

We assembled some of the food world's best and brightest to partner with to grow our presence and raise awareness in the food world. These fifteen thought leaders range from chefs to food writers and activists to farmers. The group, which includes Zoe Adjonyoh, David Burtka, Marika Bender, Kyle MacLachlan, Julia Turshen and more, is charged with infusing even more delicious ideas into all the ways God's Love serves those living with severe and chronic illness. We can't wait to manifest the ideas they generate.



5 We made free music accessible to our clients in their own homes.

We're thrilled to have partnered with Music That Heals, an organization that brings the therapeutic power of music to people who are sick, to launch a monthly series of concerts on YouTube exclusively for God's Love clients. Each edition offers a series of professional performances featuring a wide diversity of genres: classical, pop, jazz, and soul, just to name a few.

Ten Things We're Proud of This Year *continued*



6 We launched a program to provide medically tailored meals to U.S. military veterans living with PTSD.

Through the generous support of Craig Newmark, the Bob Woodruff Foundation, PyschArmor, and the NYC Department of Veterans Affairs, we are able to provide care to veterans and qualifying family members with the commitment to care and dignity characteristic of God's Love We Deliver, complete with training in clinical, trauma-informed support and communication. Participating veterans will receive ten meals a week—and, of course, celebratory deliveries for their birthday, Thanksgiving, and Winter Feast!



8 Partnerships with Martriark Foods, Project EATS, and Burlap & Barrel spices double down on efforts towards sustainability.

From upcycled broth made with remnants of vegetables that would otherwise become waste to herbs grown on our rooftop and one a few miles away to equitably sourced spices, we are finding creative ways to end food waste and support health at every level of food systems.



7 We adapted amidst rolling tides of Covid-19 to keep our service going strong.

With the hard work of our passionate staff, tireless volunteers, and generous supporters, we were able to weather the challenges wrought by a swiftly changing public health landscape that often had a heavy impact on the lives of our clients. Not only did we sustain, we grew: changing protocols to keep everyone safe, delivering shelf stable meals and personal care kits, enrolled thousands of new clients and kept nearly 10,000 clients, children, and senior caregivers nourished.

9 Rep. Jim McGovern, a national hunger alleviation champion, visited and volunteered.

Rep. Jim McGovern of Massachusetts chairs the House Hunger Caucus and authored the first bill targeted on expanding access to medically tailored meals. We were so thrilled that he honored Gods Love We Deliver with a tour of our building and joined our President & CEO Karen Pearl for a volunteer shift in the kitchen.



10 We launched our Care Transitions program.

This program empowers people recently discharged from hospital with a tool to reduce risk of future illness. It enlists insurers and health groups as partners in providing home-delivered medically tailored meals. The Care Transitions program offers rapid delivery of meals within 48 hours, support and education provided by our Registered Dietitian Nutritionists, and more.

Remembering Ganga Stone

October 30, 1941-June 2, 2021



Ganga Stone

Our founder, Ganga Stone, passed away in June. We reflect with great admiration on the life of this fearless visionary. She responded to a crisis and crafted a mission and model to build a better New York by providing food, dignity, and love for our most vulnerable residents living with critical illness.

Friend and co-founder Jane Best says, “It was a great honor in my life to work side by side with her...to feed so many people in such a desperate situation, bringing a meal and a smile, and to create the opportunity for so many to experience the joy of volunteering.”

Ganga was working as a hospice worker in 1985 when she paid a visit to Richard Sale, a man dying from HIV/AIDS. Seeing that he was too sick to shop or cook for himself, Ganga realized that something as simple as a delivered meal can offer love and dignity to someone who is ill—and that nutritionally tailored meals could support medical treatment.

While delivering a meal to Richard, she was walking down the street, meal bags in hand, when a local minister told her, “You’re not just delivering food, you’re delivering God’s love.” This became the name of a new organization that began with one simple act of kindness and expanded into the organization we are today.

When HIV/AIDS was ravaging NYC, Ganga’s skill in enlisting volunteers meant those living in isolation received not only nutritious meals but also a smile and a visit from someone who cared. The small operation that started in her apartment now nourishes more than 10,000 New Yorkers annually, having cooked and home-delivered more than 2.4 million meals last year.

Thousands have found purpose at God’s Love, helping their ailing neighbors by helping cook and home-deliver meals. Ganga always felt great joy in her work, whether delivering meals across the city, stirring soup with friends, or distributing donation cans to countless supportive businesses. Over the years, Ganga stayed in touch. She never stopped offering advice and telling us how proud she was of our continued efforts to deliver meals, with compassion and love, to those who are sick and hungry. We are honored to carry on her life-affirming efforts. Thank you, Ganga. You will be forever in our hearts.

To learn more about Ganga’s life and legacy, please visit glwd.org/rememberinggangastone

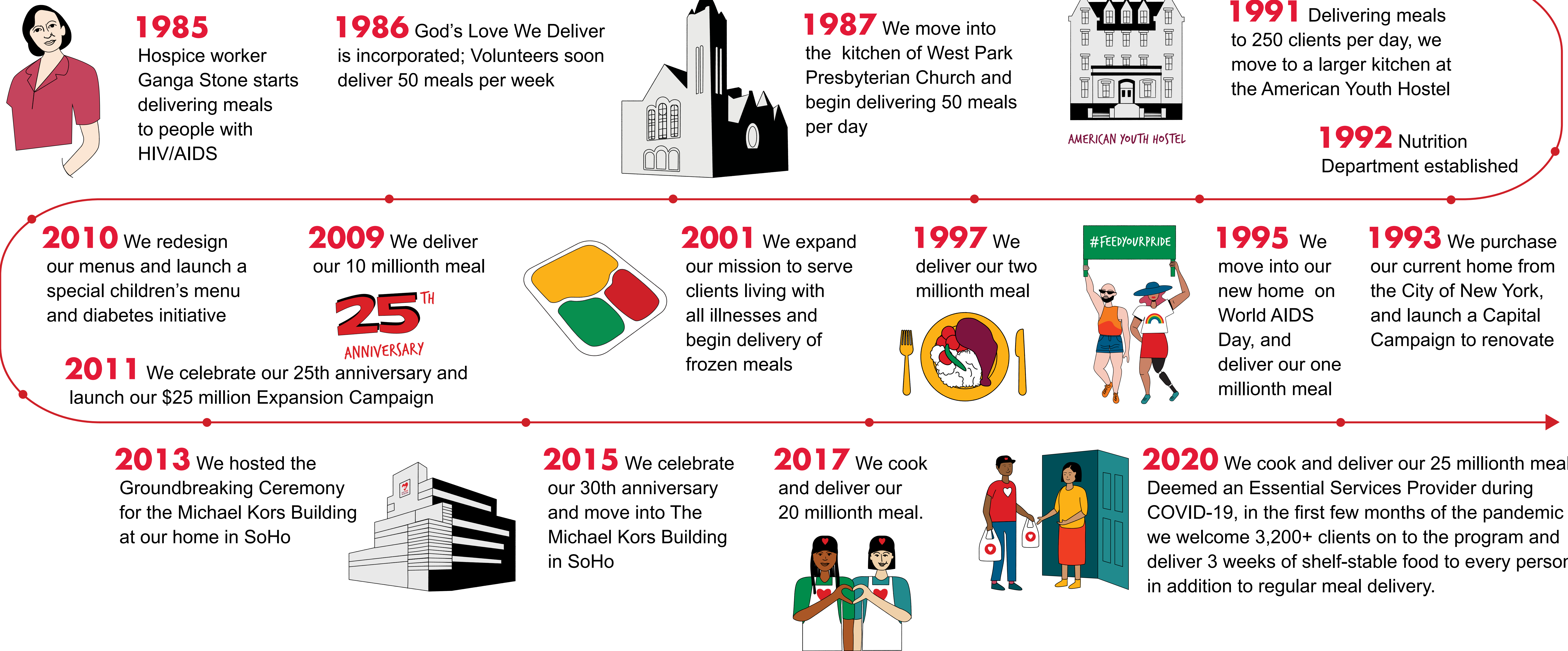


clockwise from top left: Jane Best and Ganga Stone; Scott Bruckner, Ganga Stone, Blaine Trump, Michael Sennott and Karen Pearl; Ganga and marchers at the NYC Pride March; Ganga with God’s Love staff

Celebrating 35 Years



God's Love We Deliver is celebrating our 35th anniversary. So much has changed in our 35 years, but our core values have not. When New Yorkers struggling with malnutrition, illness, hunger, and isolation contact God's Love, they find a community who cares deeply about them. Together, we are dedicated to cooking and delivering the individually-tailored meals and providing the nutrition counseling that our clients require at a time in their lives when they need it most. Thank you to our phenomenal supports, volunteers, and staff who have made our 35 years such a wonderful time of growth, innovation and achievements.



Changing with the Tides and Responding to Crisis: COVID-19



God's Love We Deliver has never stopped working through the continued challenges of the COVID-19 pandemic. In the early days, we adapted rapidly to meet increased demand while instituting social distancing measures that decreased volunteer and staff capacity. In this new pandemic, we have drawn from our legacy of caring for those who are isolated and alone, too sick to shop or cook for themselves, to respond to COVID-19 and build an even stronger community and city.

God's Love, along with other medically tailored meal organizations, were essential in meeting the crisis of food insecurity that resulted from necessary social distancing policies and inevitable economic disruption. Reliable and safe home delivery is more important than ever: our food helps reduce hospital admission for people who are especially vulnerable to the most dire outcomes of this virus. We remain committed to the safety of every volunteer, staff member, client and family member in our reach as we continue to navigate the ongoing changes of life during COVID-19.



As of this writing, the infection rate is on the rise again all over New York City. We continue to be there for our vulnerable neighbors, including so many who are isolated from their family and caregivers due to the need for social distancing. Our Human Resources Department keeps staff and volunteers informed on the latest COVID-19 safety protocols to ensure everyone entering our building is safe. Staff and volunteers are always required to wear masks while in the building. For Thanksgiving, we maintained all safety protocols to ensure clients, volunteers, supporters and staff remained safe and socially distanced at all meal distribution centers and during delivery. We have held many of our events virtually, to ensure attendees could participate while also staying safe. Many things have changed since March 2020, but at God's Love the most important thing has not: we continue to enroll clients in our program of home-delivered, medically tailored meals and unlimited nutrition education and counseling, and we cook and deliver all meals with lots of love. We were able to rise to the occasion because of compassionate donors and supporters like you. As we all wait for the vaccine, many of our newly enrolled clients will be with us to stay. We hope you will, too.



Signature Events



The Golden Heart Awards – December 1, 2020

The 14th annual Gala held special significance to us and our supporters: it coincided not only with World Aids Day but also our 35th year of serving New Yorkers who need nutritious meals when they get sick. The virtual celebration on Tuesday, December 1st honored our devoted frontline workers whose contributions were a lifeline to so many. The event was hosted by Michael Kors and Amber Ruffin. There were celebrity performances and appearances from Audra McDonald, Iman, Seth Meyers, Jane Krakowski, the original cast of RENT, and many more! Guests received a lavish box of goodies chosen by Chef Michael Anthony of Gramercy Tavern; which of course included Chuck's Famous Brownies.



Love Rocks NYC – June 3, 2021

Love Rocks NYC returned to the Beacon

Theatre for a livestream event produced by John Varvatos, Greg Williamson, and Nicole Rechter on June 3. The fifth annual iteration of the concert paid special tribute to NYC frontline workers and their essential role in the city's ability to thrive. Hosts Jeff Garlin, Michael Imperioli, and Bernie Williams kept the stage hot for spectacular musical acts, including Gary Clark Jr., Billy F Gibbons, Warren Haynes, Emily King, Ledisi, Pedrito Martinez, Tash Neal, Fantastic Negrito, Ivan Neville, Grace Potter, Yola, and more. In addition, surprise host Bill Murray introduced a “young man from across the river,” also known as Jon Bon Jovi; special guest Tina Fey brought on Sara Bareilles.

One of the most inspiring moments of the night came when our President & CEO Karen Pearl took the stage to honor frontline workers, recognize and give thanks to God's Love We Deliver staff, volunteers and supporters who were all integral during the pandemic, and to pay tribute to Ganga Stone, our co-founder who passed away on June 2. Since 2017, this benefit concert celebrating the life-sustaining work we do has raised more than \$13 million and helped to fund more than 1.3 million meals.

Race to Deliver – November 22, 2020

We were proud to innovate in the face of challenge so we could safely continue one of our longest-running and most beloved traditions: The Race to Deliver. The week before Thanksgiving 2021, our 27th Annual Race to Deliver went virtual! Though we eagerly await our next gathering in Central Park, it was thrilling to see supporters of God's Love log-in to connect virtually from around the country (and the world-hello, United Kingdom!) and run 5 kilometers to support our clients!



Participants rallied from genLOVE, our young professional supporters, and raised \$43,764 with a team of 39 runners. This year's race welcomed more than 800 participants and raised more than \$800,000. Thank you to everyone who laced up their running shoes; special gratitude goes to our sponsors, including the M·A·C VIVA GLAM Fund, ADP, Ralph Lauren and Capital One.

Partnered Events and Other Special Moments



Savoring Pride during COVID-19 While this year's Pride went virtual, we still had a blast at Savor Pride with Chefs Liz Alpern, Renee Blackman, Amanda Freitag, Kate Pelayo, Mavis-Jay Sanders and Sicily Sierra. Their recipes spoke of the chefs' diverse and wonderful perspectives, much like the colors of the Pride flag. Chef Alpern made a seasonal borscht. Chef Blackman prepared chicken thighs seasoned with ginger and cilantro along with confit potatoes and charred broccolini. Chef Freitag made a lamb burger with mint yogurt. A ginger-honey glazed salmon was shared by Chef Pelayo. Chefs Sanders and Sierra presented pan-seared fish with green sauce and white bean salad. Thank you to our host Kalen Allen and to our wonderful partners at NYC Pride for a fabulous event. If you missed Savor Pride or want to learn a new dish from one of these chefs, go to glwd.org/savorpride2020



Douglas Elliman Rides for Love The 8th Annual Douglas Elliman Ride for Love was a huge success, with riders cycling up to 100 miles across all five boroughs, the Hudson Valley, Long Island, and even in the far-flung West Coast of the U.S.A! The devoted Ride For Love community includes Douglas Elliman Agents, the founders of this event, as well as almost 100 additional supporters. This event has raised over \$1,150,000: for that we couldn't be more grateful to the Ride For Love Director Bridget Harvey and everyone who pushed their pedals towards better health for NYC's most vulnerable!



Delivering Love to the Ali Forney Center On Thanksgiving, after a morning's delivery of 10,000 meals to clients around the five boroughs, God's Love volunteers and supporters distributed an additional 100 Thanksgiving meals – 80 regular and 20 vegetarian – to LGBTQ+ homeless teens from the Ali Forney Center.

"We are grateful for the care and generosity of the God's Love We Deliver family," says Alexander Roque, President and Executive Director of the Ali Forney Center. "Our work is centered around helping to build community and family. This showing of love helps to demonstrate for our youth that they are worthy of being cared for and worthy of love."

We're honored to bring this love and holiday spirit to these youth and our wider community.

Partnered Events and Other Special Moments *continued*



Making the Holidays Taste Like Home God's Love continued to bring Thanksgiving holiday cheer to our wider community by delivering a special holiday meal to a shelter for unaccompanied minors, children who have been detained by immigration without their parents. We were asked to send food that "tastes like home." Our chefs cooked pupusas de chicharron (a traditional Guatemalan/El Salvadorian pork-stuffed masa with traditional coleslaw), and pepian de pollo con arroz y frijoles (a traditional Guatemalan chicken stew with coconut rice and beans) for the kids to enjoy. The children also received tres leches cake for dessert. God's Love is proud to bring a little bit of home – and a lot of love – to these children during the holiday season.



Our Volunteers: Helping Hands and Giving Hearts



Though the city shut down when COVID-19 hit, God’s Love never did. That was only possible with the unwavering care and generosity of “of our volunteers’ helping hands and giving hearts. Here are some of the things our volunteers helped us accomplish this year. They:

- » Helped us cook and home deliver over 10,000 meals each day to our clients and their children and senior caregivers.
- » Celebrated our largest holiday season ever, preparing, packaging and delivering 10,000 Thanksgiving feasts and 10,000 Winter Feasts, along with special holiday totes.
- » Helped us package and deliver 210,000 emergency shelf-stable meals in one weekend in April.
- » Added shifts to their week or extra hours to their shifts (and those who couldn’t come in sent us emails and phone calls letting us know they can’t wait to be back).
- » Created hundreds of holiday cards and Cards of Caring, bringing so much joy to our clients.
- » Complied with our updated COVID-19 safety protocols including masks and social distancing.
- » Attended our Town Hall meetings.
- » Decorated birthday cakes and chipped in to help with holiday brownie production.
- » Delivered meals in wind, rain, and snow.

To our volunteers: thank you for being our partners, and our heart.



1000+ Volunteer Hours



David Abramson
Joan Adler
Carol Alexander
Mitchell Applebaum
Mary Pat Archer
Victoria Arzano
Gayle Balsky
Marilyn Bardo
Alan Baron
Debbi Baum
Joan Bennett
Suzan Bernstein
Shawn Bethune
Bernard Biron
Ann Bodnar
Jeri Boylan
Rusty Breedlove
Marla Jo Brickman
Michael Brodesky
Paul Brotman
Lydia Brown
Thomas Brunner
Juliana Bustamante
Sharon Cacioppo
Sunny Cade
Terry Callaghan
Kathleen Caronna
Avon Chandler
Sherry Chang
Danny Chen
Lloyd Cheu
Lynn Christie
Edward Coffina
Carole Cohen
George Cominskie
Rob Copeland

Mari Cossaboom
Paula Coyne
Brent Crook
Elizabeth Currey
Brenda Curtis
Maggie Cusimano
Drew Dasent
Peter Daw
Debbie Deitcher
John DeRemigis
Randy Deutsch
Mary Devine
Jon Devries
Gerald Deyounge
Molly Dieterich
Florence Dixon
Benjamin Dobson
Bill Douglass
Karen Duda
George Dussan
Donald Eckert
Janice Elkinson
Aurora Estner
Lorna Facey
Lynda Feld
Daniel Feldman
Stephanie Fine
Richard Fink
David Fitterman
Fitz Fitz
Mary Fong
Martin Friedman
James Gallagher
Nicole Gallagher
Joyce Garlick
Laurie Gelbart

Charlie Gerald jr
Timothy Gibson
Roslyn Gilbert
Denise Gilson
Dorothy Gingeras
Lisa Glover
Fred Goldberg
Sharon Goldfarb
John Goodfriend
Barbara Gould
Norma Grant
Manuel Greer
Sara Grodensky
Karen Groeger
Mary Hatch
Scott Hayter
Mark Heflin
Terry Hofler
Joseph Hooper
Dan Horowitz
Brian Hotaling
Gerardo Huertas
Desmond Hunnighen
Lucy Hwang
Linda Irby
Joanne Jablow
Alice Jan
Adriane Jenkins
Barbara Jones
Susan Kantrowitz
Linda Kates
James Kaufman
Michael Kenny
Sueanne Kim
Jeff Kindley
Liz Kinney

Phyllis Kirschenbaum
Jeff Kohler
William Komar
Susan Kupferberg
Jocelyne Lamour
Alfonso Lee
John Lee
Pauline Lee-Pristin
Jicky Leidicke
John Lemien
Irv Lerner
Wing Tat Leung
Herb Leventer
Angel Levy
Minna Lipkin
Cindy Little
Mindy Liu
Shirley Logan
Lai Louie
Dennis Luczak
T. J. Luty
William Lux
John Madera
Leila Mae Makdissi
Marlene Malamy
Michael Mango
Andy Marber
Charles McEwen
Patrick McGuire
Patrick McHugh
Francis McLaughlin
Joyce McShane
Helen Messina
Thomas Miller
Andrew Mirer
John Moore

Ed Musselman
Robert Nagle
Don Newcomb
Li Ng
Keith Nicholson
Michael Normile
Kathy O'Callaghan
Jim O'Connor
Robert O'Sullivan
Babi Ocean
Richard Ophals
Joseph Page
Martha Palma
Ruth Pardo
Ann Parker
Marco Pievani
Nancy Pirodsky
Leslie Plotkin
Mark Porter
Lily Potter
Edward Prostack
Vincent Rada
Lelia Raibourn
Carol Rapoport
Anjali Ray
Bill Riegel
Barbara Roberts
Aimee Ross
Barbara Rubel
Paulo Santos
Allison Saunders
Randy Savitt
Richard Schack
Judith Schasberger
Evan Schwartz
Brian Scribner

Marsha Shaw
Jane Shea
John Sheehan
Jacqueline Shore
Joan Simon
Darnley Simon
Raj Singh
Simone Smith
Suzy Sobel
Angelo Sperrazza
Bonnie Stanke
David Stern
Neil Stevenson
James Strickland
Lorrie Stuart
Lawrence Swehla
Merritt Tam
Julie Tan
Monica Tarver
Ilda Teran
Anna Torres
Klaus Villa
Sylvia Vogelmann
James Walsh
Gretchen Walther-Dumler
Nadia M Wechsler
Bob White
Lavern Whyte
Jonathan Wind
David Wise
Annie Wong
Stacy Young

Our Volunteer Groups



The Ad Council

Alfredo Paredes Studio

Cauldwell Wingate

Cerami & Associates

CLEAR

The Department of Family and Community Medicine
at SUNY Downstate Health Sciences University

Diageo North America

Hellessy

JPMorgan Chase & Co.

LaSalla and Friends

Meeting Professionals International Greater New York Chapter

New York-Presbyterian Brooklyn Methodist Hospital

New York Social Network

NYC Men in Nursing

Refinitiv

Ryan Chelsea-Clinton

Scott Durkin and Friends

The Row

Saying Farewell to Chuck “The Baker” Piekarski



For almost 30 years, Chuck “the Baker” Piekarski worked tirelessly at God’s Love We Deliver. More than nine million cakes, brownies, and cookies later, in January, Chuck untied his apron for the last time.

Our thanks to Chuck for being our head baker all these years, offering something sweet for our clients every day with his desserts and birthday cakes. Chuck insists on personalizing every birthday cake because it makes him stop and think about each person he is baking for.

While Chuck was with God’s Love for nearly three decades, his history with our work extends beyond that.

In 1984, while working at a bakery in Rhode Island, Chuck fell in love with a beloved middle school teacher named Alan. In 1987, Alan got sick and was diagnosed with HIV. His illness moved so fast. Chuck did everything he could to help him, making him milkshakes or fruit smoothies because that was all he could keep down.

From Alan’s diagnosis to his passing was only 3 months. After Alan died, Chuck moved to New York City to make a career in acting, but the work was inconsistent. One day, he found an ad in the paper for God’s Love We Deliver. For his “audition,” Chuck made three desserts, and Chuck stayed with us for nearly three decades.

Chuck told us, “My baking has always been very personal, and there’s not a day that goes by when I don’t think of Alan. But I also think about the people we help every day with a meal, a kind word, or a birthday cake — thousands of individuals deserving hope, dignity, and love.”

We celebrate the sweet treats he’s baked for our clients, his brownies we’ve sent across the country, and the dedicated service and constant kindness he has brought to God’s Love. We know our staff, volunteers, and supporters will miss him greatly.



L to R, top to bottom: Chuck and assistant baker Jose Pizarro, Chuck with Katie Couric at the launch of the God’s Love We Deliver cookbook, Chuck at NYC Pride, Chuck with Joan Rivers at our 15 millionth meal celebration, Chuck with God’s Love staff at the construction site of the Joan Rivers Bakery for The Michael Kors Building, Chuck with Dominique Ansel

Our Clients



Delivering Love to Lashelle and Nya

Our client Lashelle lives with severe diabetes, hypertension, and asthma. She’s also a mom, and this spring her daughter Nya turned 18 just before mother’s day. Nya’s off to college in the fall to work towards a psychology degree: this moment in time holds many reasons for celebration. But they have known struggle as well. Lashelle told us, “It’s one of the hardest things to be sick as a parent, but it’s even harder when you’re a single parent.”

God’s Love makes a difference in their lives. Our medically tailored meal delivery has allowed her to focus on raising her daughter without worrying about cooking or shopping for food. Lashelle has spoken extensively with our nutritionists, as her diet needed to

change a few times over the course of her treatment. She appreciates how they are open, loving, and supportive; she knows she can get her needs met without feeling shamed.

Nya launches her college journey inspired by her mother’s life experience. She wrote her college essay about how her mother’s health journey drove her to pursue a life path that will allow her to help others. Lashelle is so grateful to everyone who works at, volunteers with, and supports God’s Love. She especially wants to thank the chefs and drivers. She says in every bite and every encounter, you can feel the love that goes into the entire operation.



Our Clients

Delivering Love to Raphael

Raphael is an Army veteran who served his country for 23 years between active duty and reserves. He was born in England and grew up in the Bronx; deciding to enlist when he saw many others in his neighborhood suffer because lack of opportunity left them with only poor choices. Rafael deployed to Iraq and Kuwait in Operation Iraqi Freedom before being diagnosed with severe diabetes while overseas. He reflects that he felt very nervous in his time close to combat.

Symptoms of PTSD emerged on his return to the states. Some were triggered by loud noises—the backfire of a motorcycle—and exacerbated by the preconceptions of civilians. With treatment he has been able to better understand the condition and begin healing. His artistic practice is a big part of that healing process. He works in many mediums, including mosaic, paint, and wood. He says that the hobby relaxes his mind and makes him feel calm.

After joining the new God’s Love We Deliver veterans mental health program, he is grateful to receive meals. The service decreases the stress he feels when he has to go out to purchase food. Before, he would quickly buy whatever was close and cheap; mostly processed food with a high sugar content. But his meals are fresh and well-seasoned while also being low in salt and sugar—exactly what he needs to support his heart and to manage his diabetes. Raphael has gotten his mother involved with God’s Love and appreciates the big impact this can make to other veterans who, like him, need nutrition and care delivered with love in order to heal some of the harshest wounds.



Financials



God’s Love We Deliver earns the highest ratings from Better Business Bureau, Charity Navigator, and GuideStar. These ratings reflect the organization’s demonstration of strong financial health and commitment to accountability and transparency.

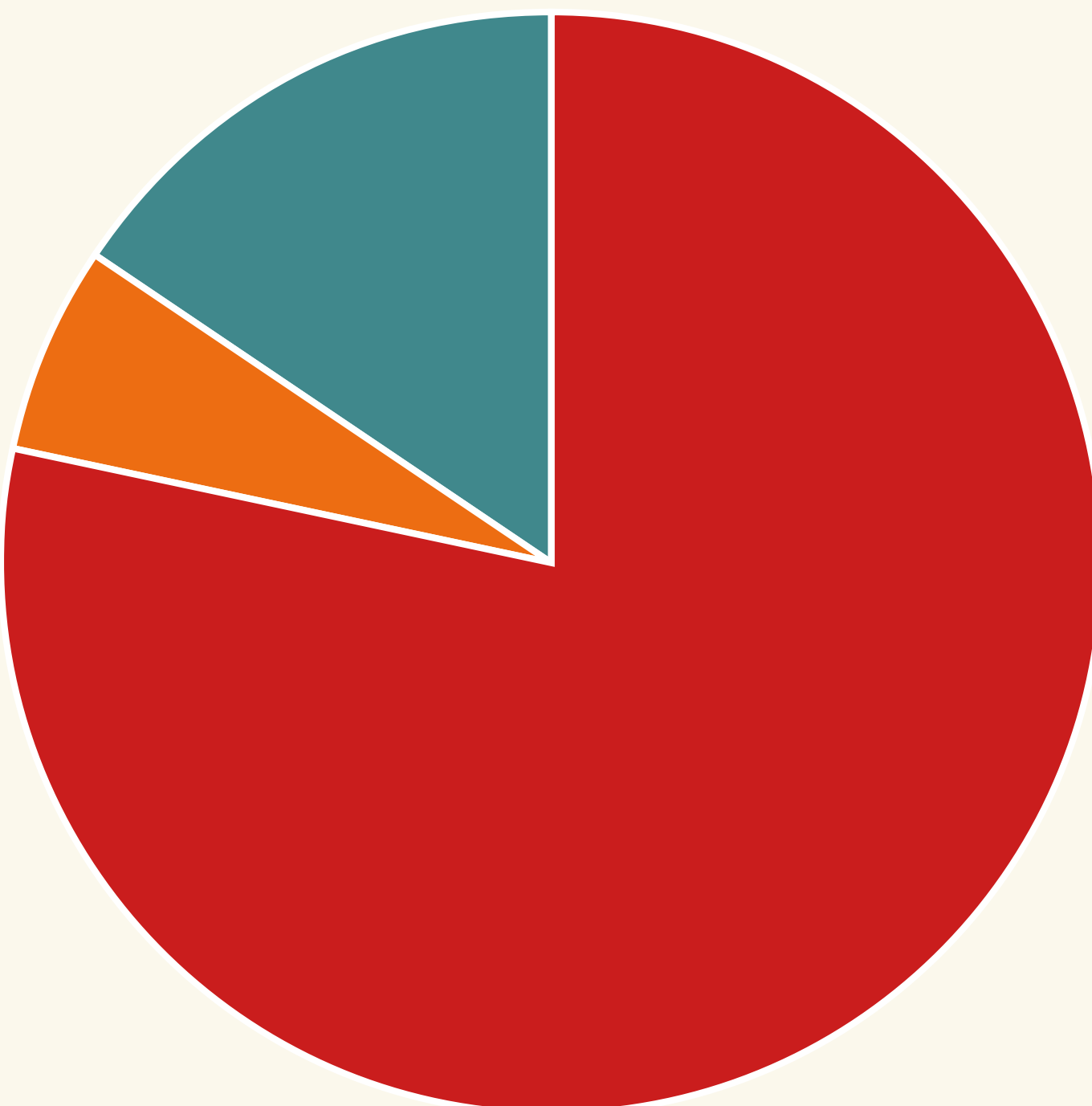


Our 8th consecutive year with the Charity Navigator four-star rating



Revenue

■ Special Events <i>(net of direct costs)</i>	\$4,659,133
■ Individuals	\$5,554,429
■ Health Care and Partnerships	\$5,220,717
■ Government	\$6,172,950
■ Foundations & Corporations	\$5,170,221
■ Bequests	\$1,499,853
■ Direct Mail	\$1,669,968
■ Other Income	\$1,776,968
	\$31,724,239



Expenses *Excluding depreciation*

■ Program	\$19,681,687
■ Management & General	\$1,515,822
■ Fundraising	\$3,879,543
	\$25,077,052

Funding from generous individuals, foundations, corporations, and government sources provide a diversified base of support, helping to ensure that we can continue our work without overreliance on one revenue stream. We work hard to guarantee that valuable contributions are used on behalf of our clients. In FY21, 79% of all expenses went directly to client programs. Our donors expect no less.

Join Us



Comprised of a growing group of special individuals who make annual gifts of \$1,000 or more, the valued members of the Golden Heart Society provide critical program support for the clients of God’s Love.



Monthly donations provide donors with an easy way to support our clients and ensure a steady source of good nutrition, hope, and dignity for the people and their families who depend on our meals.



Friends who include God’s Love in their estate plans are invited to join our Legacy Society. Planned gifts, including bequests, create an extraordinary opportunity to provide the much-needed resources that will enable us to help the seriously ill today and well into the future.



GOD’S LOVE WE DELIVER The VANguard Program

We would not be able to home-deliver the more than 2 million medically tailored meals each year for our clients without our state-of-the-art refrigerated vans.

For \$70,000 all-in, members of our VANguard program can purchase a van for God’s Love We Deliver, and be with us each mile, providing meals that heal, delivered with LOVE!

We’ll include your name and logo on the top and sides of the van, so that every New Yorker who passes by knows that **you’re a member of our VANguard.**

Thank You to Our Supporters



VISIONARY \$100,000+

Bloomberg Family Foundation
Bloomberg Philanthropies
Bloomberg
Andrew A. Campbell
Steven & Alexandra Cohen Foundation, Inc.
Steven A. Cohen and Alexandra M. Cohen
DaVita Total Renal Care, Inc.
Mr. Stanley Vincent Diglio and Family
Mr. John Gray
Himan Brown Charitable Trust
The JPB Foundation
The Kors Le Pere Foundation
Michael Kors, Inc.
Michael D. Kors and Lance L. Le Pere
Ms. Lois Elaine Larsen
M. Magtague Group
M·A·C VIVA GLAM Fund
Macy's Foundation
Macy's
Terrence A. Meck and Breton Alberti
Mellon Foundation
Mother Cabrini Health Foundation
The New York Community Trust
Craig Newmark Foundation
Craig Newmark Philanthropic Fund
Craig Newmark and Eileen Newmark
The Palette Fund
RJKB Family Charitable Foundation
Cindy Secunda and Thomas Secunda
Selwyn Donald Sussman
Take-Two Interactive Software, Inc.
Mr. Vincent Joseph Villa
Katy and Greg Williamson
The Yulman Foundation
E. Richard Yulman and Janet Yulman

FOUNDER \$50,000+

Ms. Charlotte Anne Alexander
Bank of America Charitable Foundation
Bank of America
Paul Beirne
Mr. Daniel F. Berkowitz
Broadway Cares/Equity Fights AIDS
CAA Brands USA LLC
Condé Nast
Barbara Dauphin-Duthuit
Richard Feldman and Jon Nathanson
Donna M. Fontana
Francesco and Mary Giambelli Foundation, Inc.
Gilead Sciences, Inc.
David Hockney
HQ Factory
Vincent La Padula
Network for Good
Properwell Shoes Manufacturing Limited

Lorraine Michele Reeder and Robert Wallace Reeder, III
Bill and Kristi Ribbecke
The Morris and Alma Schapiro Fund
Evan Schwartz and Robert K. Fitterman
The Wendy E. Scripps Foundation
Wendy Scripps
Michael Sennott
Simone Accessories Collection Ltd.
Howard Stern and Beth A. Ostrosky
Wachtell, Lipton, Rosen & Katz

BENEFACTOR \$25,000+

Accenture LLP
American Express Foundation
Automatic Data Processing Inc.
Blackstone Charitable Foundation
Michael R. Bloomberg Revocable Trust
Michael Rubens Bloomberg
Mark S. Brashear and Jim Shreve
Capital One
The Y.C. Ho/Helen and Michael Chiang Foundation
Con Edison
Scott Joseph Durkin and David Menendez
Estée Lauder Companies Inc.
Gerner, Kronick + Valcarcel, Architects
Randolph Gerner
The Gottesman Fund
The Happy Elephant Foundation
Anne Hathaway and Adam Shulman
Heritage of Pride, Inc.
Idol Family Foundation
Alexandra Idol and Justin Sperling
John Idol and Annalia Idol
Ms. Scarlett Johansson
Mr. Frederick R. Koch
Kandy Kramer Fund
Kandy W. Kramer
Lafayette 148, Inc.
Eugene M. Lang Foundation
The Ronald & Jo Carole Lauder Foundation
Leonard and Judy Lauder Fund
Leonard A. Lauder and Judy Lauder
Mr. Ronald Lauder and Mrs. Jo Carole Lauder
Lenke Family Foundation
Lawrence G. Lenke and Elizabeth A. Lenke
The Ludwig Family Foundation Inc.
Anne and Joseph McCann Charitable Fund
Joseph and Anne McCann
McKinsey & Company, Inc.
Michael Meagher and Daniel Romualdez
Midler Family Foundation
Ms. Bette Midler and Mr. Martin von Haselberg
Edward S. Moore Family Foundation
Nash Family Foundation
Michael Nash and Lori M. Nash
Nordstrom, Inc.

Omer Foundation
The Lisa P. Orberg Charitable Fund
The Eleanor R. Orberg Fund
Lisa Orberg
Oxeon Partners
Paul, Weiss, Rifkind, Wharton & Garrison LLP
The Michael and Robin Psaros Family Foundation
Michael Psaros and Robin Psaros
Caryn Seidman-Becker
Louis Guy Sollecito
Soviero Foundation
Mr. and Mrs. Thomas T. Soviero
Starry Night Fund
Tavoso Family Charitable Fund
Leanne Tavoso and Richard Tavoso
UBS Global
Claudia Wagner and Don Lebowitz
Neil and Virginia Weiss Foundation in Memory of Steven Weiss

ADVOCATE \$10,000+

Alpern Family Foundation, Inc.
American Airlines
Americana Manhasset
AmTrust Title
The Audible Fund
Baccarat
Barclays
Ms. Blaine Beard and Mr. Steven C. Simon
Erich Robert Bechtel and Lilly Chu
Bergen Foundation
Candice Bergen
The Bernheim Foundation, Inc.
Charles A. Bernheim and Heather P. Bernheim
Stephanie H. Bernheim
Binn Family Foundation
Jason Binn
The Black Enterprise
The Dorothea Blom Fund
Dorothea Blom
Laurie Bloomfield and Jay Bloomfield, Esq.
BNP Paribas
Bongiorno New York, Inc.
Laura Louise Breyer
Butcher Family Fund
CBS Interactive Inc.
The Lois Chiles Foundation
Lois Chiles and Richard Gilder
Citizens Bank
CLEAR
The Concordia Foundation
Deirdre Costa Major
Randolph Lee Cowen and Phyllis R. Green
The Cowles Charitable Trust
Mary Ann Czarcinski
Susan and Francois de Menil
Ms. Anne E. Delaney
Mr. Adam Dell

Gaylord Donnelley Charitable Trust
Douglas Elliman
Ernst & Young LLP
Excess Line Association of New York
The Fain Family Foundation
Colleen Fain and Richard Fain
Howard and Barbara Farkas Foundation
Cynthia and Herbert Fields Fund
Cynthia and Herbert Fields
Mr. Abraham Fistel
Fossil Group, Inc.
Frontstream
FTN Co., Ltd.
Tracy C. Fu and Sharon Wee
Gay Men's Health Crisis
GEM Realty Capital, Inc.
Ms. Kristen F. Giarrusso
David Ginzberg and Shirley Ginzberg
Goldman Sachs Gives
Leon Goldstein
Mr. Luis E. Gonzalez
Barbara Goodstein
Lola Goodstein
Google Gift Matching Program
Roberta and Earl Graves
Greater New York City Affiliate of Susan G. Komen
I. Halper Charitable Account
Hearst Corporation
Herman Kay Company, Inc.
Hofheimer Gartlir & Gross, LLP
The Hollis Stern Charitable Fund
Brian P. Hotaling
I. Halper Paper & Supplies, Inc.
ING
The Rona Jaffe Foundation
JPMC Private Bank (Individual donor)
JPMorgan Chase & Co.
Craig and Isabel Kallman
Jean L. Karotkin
Calvin Klein Family Foundation
Calvin Klein
Knee Maddox Charitable Fund
The Krumholz Foundation
Lambert Family Foundation
Bill G. Lambert and Sheila Lambert
Aerin Lauder and Eric Zinterhofer
Mark R. Lehrer, Esq. and Gaby Ferman Lehrer
LERET LERET
The Anne Levy Charitable Trust
Alan Littman and Amy Littman
Luxottica USA
M & L Goodstein Charitable Foundation Trust
John and Linda MacDonald Foundation
MacDonald-Peterson Foundation
Justin Marcus
Marweld Family Charitable Fund at Schwab Charitable
Anthony E. Mason and Christina Mason

Thank You to Our Supporters *(continued)*



Brian J. McCarthy and Daniel Sager
Daniel Meyer and Audrey Meyer
Diana M. Moore, Ph.D.
The Gates Moran Family Philanthropic Fund
R. Michael Moran and Jeffrey L. Gates
Morgan Stanley Foundation
Jeffrey Moskin
Mr. Richard Mumby
Myrin Family Giving Fund
Alarik Myrin
Karen and Faris Naber
NFP Corp.
Henry Nias Foundation, Inc.
The Norris Family Charitable Fund
Ryan and Carla Norris
Susan G. Oberstein and Fred M. Oberstein
On Prospect Enterprise Limited
Karen S. Pearl
Ms. Jodi Peikoff and Mr. Evan Gsell
Brett Alan Phillips and Paula A. Coyne
Phillips-Van Heusen Corporation
Phillips-Van Heusen Foundation, Inc.
PricewaterhouseCoopers LLP
Ralph Lauren Corporate Foundation
Ariana Rockefeller
Joshua Rosenthal Fund
Jordan Roth and Richie Jackson
Rob L. Royall, II
Henry Rybicki
Salesforce.com
Francesco Scattone Giving Account
Francesco Scattone and Judy Gibbons
Ms. Lorraine Schwartz
Glenn P. Schwitter and Ann Marie Fisher
Danielle C. Segal and Jonathan Segal
Sam Shahid Charitable Fund for the Arts
Sam Shahid
Sheng Giving Fund
Amy Sherman-Palladino
Judith Skurnik and Michael Skurnik
Fred B. Snite Foundation
The Ted Snowdon Foundation
Edward W. Snowdon, Jr. and Leon Gerald Violante
Southern Glazer's Wine & Spirits
Splendid Spoon
Stairway Fund
The Linda B. & Howard S. Stern Family Foundation
Hollis Stern
Mrs. Linda Stern
Streamlinevents
Patricia M. Suh
Sunshine Foundation
Mr. Jeffrey Evan Taback and Ms. Inanna H. Donnelley
Karen Taylor
David Terveen
The Richard & Elizabeth Boggio Foundation Inc.
James F. Tighe

Susan Ungvary
United Talent Agency, Inc.
Venable Foundation
Claudia Wagner and Don Lebowitz Fund
Warner Music Group
Whispering Bells Foundation
The Whole Family Foundation
Lance C. Williams and Grant Kretchik
Eva Wolfsohn Fund at Schwab Charitable
Peter Wunsch
Zabar's and Company Inc.
Zhejiang Jiaxin Silk Corp., Ltd.

PATRON \$5,000+

A G Foundation
AJG Fund
Alston & Bird LLP
The Amelia Foundation
Erich G. Anderer, M.D. and Kisha Anderer
Stefano Angelo and Rachel Angelo
Anthem Insurance Companies, Inc.
Micky and Madeleine Arison Family Foundation
Micky and Madeleine Arison
Nicholas Athanail and Tony Testa
AXA Foundation Fund of Fidelity Charitable Gift Fund
Ms. Deborah Bachrach
James C. Baker and Veronica C. Baker
Grace V. Barber and Ronald G. Barber
Kelly A. Behun and Jay Scott Sugarman
H. Carol Bernstein-Eckstein & Martin R. Eckstein Family Fund
H. Carol Bernstein-Eckstein and Marty Eckstein
Better World
Big Day Foundation
Brian and Marsha Bilzin Fund
Brian Bilzin and Marsha Bilzin
Biolumina
Blaylock Van, LLC
Ellen Block
BNY Mellon
Ken and Lisa Bodmer Fund
Kenneth Bodmer and Lisa Bodmer
Ms. Ann E. Bodnar
The Justin and Melissa Boisseau Fund
Justin Boisseau and Melissa Boisseau
Nina M. Bransfield
Brian and Natalie Broadbent Fund
Mr. Brian Broadbent and Ms. Natalie Broadbent
Matthew and Nancy Bromberg Fund
Mr. and Mrs. Matthew S. Bromberg
Mr. Scott A. Bruckner
Willard C. Butcher, Jr.
Ana & Eric Cantor Fund
Mr. and Mrs. Eric Cantor
David and Lisa Carabetta
Jane D. Carlin and Martha Walker
Casa Nela, Ltd.

Blaisdell Casdin
CBRE
Vija Celmins
Centric Brands
Jonah Chasin
Chasin/Gilden Family Fund
Lloyd Cheu and Douglas N. Mintz, M.D.
Paul D. Clark
Class Act Fund
Cognizant
The Cohen Family Donor Advised Fund
Mr. Brian Cohen and Mrs. Jennifer Cohen
Dr. Barry Coller and Dr. Bobbi Coller, Ph.D.
Randy Cowen and Phyllis Cowen-Green Fund
Randolph L. Cowen and Phyllis Green Foundation
Dancing Tides Foundation, Inc.
Christopher and Michelle Delong
Craig L. DeSanto
Randy Deutsch and Robert S. Deutsch, Esq.
Deutsche Bank
Diageo Americas, Inc.
Drummy Charitable Trust
William M. Drummy, Jr. and Barrie J. Gillies
DuBose Family Foundation
The Ebb Point Foundation
Ms. Lisbeth F. Eng
Rachel Rutherford Englund
Ms. Eve Ensler
Equitable Foundation
Susan Etes and Howard L. Zimmerman
Euclid Transactional Inc.
Mr. John Evans and Ms. Marie Evans
Exec-Comm LLC Fund of Fidelity Charitable
Jose and Emilia Fanjul
Mr. Robert Feig
Mindy Ferguson
David Fink and Simon V. Kinsella
Bruce and Melissa Fischer Family Foundation Trust
Bruce and Melissa Fischer
Florida Crystals Corporation
FSA Store
The James J. and Joan A. Gardner Family Foundation
Merril D. Garret and Florence R. Garret
Gerson Family Foundation
Bob & Eileen Gilman Family Foundation
Eileen Gilman
Jon Gilman and Brad Learmonth
glassybaby LLC
glassybaby white light fund
Robert I. Goldman Foundation
GreatNonprofits - JustGive
Greystone and Co., Inc.
Lester Gribetz and Andrew Peters
Howard L. Grier and Anton Dudley
Agnes Gund and Daniel Shapiro
Addie Guttag
The Marc Haas Foundation

Hall Family Foundation
Bruce and Carole Hart Foundation
Alan Hassenfeld
Ms. Mary G. Heiser
Jack Roy Helland and Ilean J. Helland
David Hochman and Alexandra Hochman
James B. Hoffman and Doron Sabag
Steven L. Holley and John Hamilton
Margo Hooker and Paul J. Hooker
IAC
The Imperial Court of N.Y., Inc.
Jeffrey L. Jackman Fund of Morgan Stanley Global Impact
Jeffrey L. Jackman
Julie Schoenberg Jacobs and A.J. Jacobs
The JCT Foundation
Jerome L. Stern Family Foundation, Inc.
Ron Kanfi
Donna Weiss Karan
Rachel Kaufman
Kern Family Giving
Linda Marie Khettry
Jane Klain
Terri Lynn Krasnoff and Jeffrey P. Krasnoff
The Lillian & Ira N. Langsan Foundation
Nancy Langsan
Joanne Lavin
Ms. Jacqui Leader
John Eung Lee
David Todd Levine and Susan L. Levine
Matt Levine
Peter B. Lichtenthal and Perry S. Eisman, M.D.
Thomas Lister
Mr. Robert R. Litman
Matthew Lopez
Mr. and Ms. Douglas Lowey
Keith Manchester and Jin Manchester
Paolo M. Martino
Harris Mathews Charitable Foundation, Inc.
Mr. and Mrs. Mark Meadow
Ms. Lori Merritt
Bradley Meyer
Yossi Milo Gallery
Deborah Lee Minor Charitable Fund
Deborah Lee Minor
Peter Morrissey and Anna Morrissey
The Claire and Theodore Morse Foundation
MUFG Union Bank, N.A.
Peter Muller and Jillian Muller
Mr. Daniel Neiden and Ms. Irene Kaufman
New York University
Richard and Jane Novick Philanthropic Fund
NYU Community Fund
Monica Oberting and Greg Oberting
Maureen M. O'Leary and Jack O'Leary
Brad Oren and Judith Oren
Mark Oren and Nedra Oren
Nancy and Daniel Paduano

Thank You to Our Supporters *(continued)*



Mollie Parnis Livingston Foundation
Marvin Pestcoe and H. Elizabeth Mitchell
AJ Phillips Giving Fund
The Pisani Foundation
Carole S. Pittelman and Ira Pittelman
The Points Guy
Mr. Geoffrey Proulx
Maryann Radlinsky
The Randolph Foundation
Rexel Holdings USA
John Robards and Geraldine Baldwin
Rockefeller Group, Inc.
David Rockefeller, Jr. Fund
David and Susan Rockefeller
Bradley J. Rodenberg
The Abner Rosen Foundation Inc.
Ms. Claudia Rosen
Jonathan Rosen
D. Anson & Naomi S. Rosenthal Fund
Naomi S. Rosenthal
Daryl & Steven Roth Foundation
Mr. and Mrs. Steven Roth
Samantha Rudin Earls
Madeleine Rudin
The Susan Sarandon Charitable Foundation
Chris Sarandon and Joanna Gleason
Ms. Susan Sarandon
Sax Leader Foundation
Janet Kane Scapin
Jeffrey W. Schneider and Jeffery Ryan Povero
The Barbara Schoenberg Charitable Fund
Barbara Schoenberg
Lee B. Schrager
Mr. John Scott
Frank R. Selvaggi and William Shea
Semler Brossy Consulting Group, LLC
Bill Shea and Frank Selvaggi Fund
The Murray G. and Beatrice H. Sherman Charitable Trust
Robin R. Shinn and Annette Soper
Shinn/Soper Charity of Fidelity Charitable
Natalie and Jonathan Silverstein
Tina F. Silvestri and David C. Pugh
Joseph P. Stafiniak Foundation
Joseph P. Stafiniak and Joseph P. Shirk
Stahl Family Charitable Foundation
Steadfast Financial LP
Stella International Holdings Limited
Abraham Stern
Lynda S. Stern
Michael Stern
Mr. Carlos A. Suarez
The Sudarsky Family Foundation, Inc
Cynthia L Sullivan-Goldenberg Charitable Fund
Sweet Tuna Foundation
Mr. Gary Swidler
Jeffrey Tarr and Patsy Tarr
Mr. Robin Lord Taylor and Mr. Richard Hamilton DiBella

The Paul and Margo Charitable Fund
The Pestcoe Family Foundation
Jonathan Mark Tisch and Lizzie Tisch
Kathleen Treat and Jeremy Treat
Twelve Thirteen Ninetyone Fund
US Bank
The Vlassis Family Charitable Fund
Mr. Dax and Mrs. Rielly Vlassis
Susan Alexandra Weaver and James A. Simpson
Willis Towers Watson
Ms. Lauren Witkoff
Vicente Wolf and Matthew Yee
Mr. Johan Yang

SUPPORTER \$2,500+

Mr. Luke Adams and Ms. Christy Adams
Daniel Ades
Alan Menchel, Inc.
Amazon
American International Group, Inc.
The Anderson Fund Foundation
Kristen Anderson
Antiquarium
The Bank of New York Mellon
Raymond T. Benack
Joanne M. Berghold
Bessemer Trust Company
Noble B. Black
Mark and Deborah Blackman Charitable Trust
John N. Blackman Sr. Foundation
Mark and Deborah Blackman
Laurie Block
Candy Bonder
Bright Funds Foundation
Melissa Brown and David Siegel Fund
Ms. Cassandra Brown
Cantor Fitzgerald Relief Fund
Kathleen W. Casey
Michelle Caskey Fore
Christiane C. Celle
Annie Chan
John M. Chassaniol and James Viscardi
Ms. Peggy Cherasia
Denise Chickery and Steven J. Chickery
Morgan Cline
Nancy T. Cohen
Melissa Lynn Cohn
Michael Corridan
Corymore Foundation
Valerie Coster and Karen Simon
The Crystal Family Trust
Billy Crystal and Janice L. Crystal
Ben Cushman and George Tuttle Fund
F. Bennett Cushman, II and George D. Tuttle
Ann Cutbill
The Kay Cynamon Fund

Dr. Kay B. Cynamon
Pamela J. Damsky
D'Apostrophe Design, Inc.
Bette J. Davis and James K. Asselstine
The Depository Trust & Clearing Corporation
Robert J. Diamond and Marylee Raymond Diamond
Martin Dresner and Mark Davis
Deborah Dyson
Harold Elish and Nora Elish
Euha International, Ltd.
Fann Family Charitable Fund
The Fanwood Foundation
Farkouh Family Fund
Fred Farkouh and Martha Farkouh
Kathryn Fee and Kimberly Eads
Andrew J. Feldman Foundation
Andrew J. Feldman
Richard Fink and Jeri Fink
The Fore Family Giving Fund
Kimberly Forrest
The Forsyth - Marchini Charitable Fund
Randall W. Forsyth and Deborah Marchini
Steven Ganeless
Rita Garland
Robert and Gloria Gery Charitable Fund
Gloria Gery and Robert L. Gery
Global Facility Management & Construction, Inc.
Mr. John Gomes
Janice Goodman, Esq.
Sallie T. Gouverneur Fund
Sallie T. Gouverneur and John E. Riley
Great Hollow Fund of the Jewish Communal Fund
Great Jones Inc.
Mark Greenblatt
Joanna Groarke and David M. Gross
Susan C. Groarke
Louise Grunwald
Lynn G. Hagman Charity Account
Lynn G. Hagman
Ms. Samantha Halsey
Henry Harding
Bridget Harvey and Robert McMaster
Healthix, Inc.
Diane Heller
Stephen Henderson and James L. LaForce
Wayne Hendrickson and Ann Temkin
Mr. Micarl T. Hill and Dr. Laureen L. Hill
Home Depot
Craig M. Horowitz and Andrea R. Horowitz
HSBC
Christopher and Anne Hussey
Icon Design & Fixtures LLC
Invesco
Chris Israel and John Stassi
JAG Building Group, Inc.
Jamacha Bloom Family Foundation
Robert Price Jepsen Giving Fund

Robert Price Jepsen and Dean T. Lewallen
Annabella Joy
JRM Construction Management, LLC
Barry Kaplan
Kathryn Fee, Architect, PC
Katz & Matz, PC
Mr. Bruce Katz
Chloe Kelley and Aaron E. Kelley
Lina Kempner
Amy Keum
Sueanne and John Kim Donor Advised Fund at Schwab Charitable
Sueanne Kim and John Kim
Barry Wallace Kissane
Raymond Klausen and H. R. Nicholson
The Alan and Jane Kleinberg Charitable Fund
Alan Mark Kleinberg and Jane Kleinberg
Cynthia Kosacz Giving Fund
Cynthia J. Kosacz, V.M.D.
Rae Morgan Krelitz
Mr. Joseph P. Landy and Mrs. Mary P. Landy
The LanMar Fund at Schwab Charitable
Paul Latham Design LLC
Paul Latham
Jonathan Lau
Rob and Kristel Lazarus
Ms. Jacqueline LeGrand
David Leinwand Charitable Giving Fund
David Leinwand
Alice Leopold-Benintendi
LePatner-Tomazin Charitable Fund
Lerer Hippeau
Eric and Jennifer Leventhal
Mr. Cobi Levy
Julia Levy
Lola Taverna
New York at Home
Edward J. Ludwig and Kathleen Ludwig
John J. Mackerey and Donald M. Filicetti
Ms. Carolyn Malinsky
Naju Mancheril and Rowena Mancheril
The Grace R. and Alan D. Marcus Foundation
Matching Fund
Ms. Kristen Mathews
Mr. Steven Matz
Mr. Josef P. McAvoy
The McEntire Family Charitable Fund
Mr. J. Andrew McEntire
Mr. David G. McWilliams
Mrs. Gertrude Meyers
Frances Milberg
Nitzan and Joshua Miller Family Fund
Mr. Joshua C. Miller and Ms. Nitzan Sternberg
Jean Mitchell and Frederick Cannon
Moody's
A. Woodner Fund
New York Road Runners
Esther Newberg Fund

Thank You to Our Supporters *(continued)*



Esther Newberg
Ms. Elizabeth Newell
Susanna Nicholson
Ms. Paula Nitto
Mr. Evan Norris
Off the Gram LLC
Mr. John L. Panarace
Manuel A. Perez
Thomas Phillips and Jane Moore Johnson Family Foundation
Julie Pinkwater and William Metzger
Point72, L.P
Vivian L. Polak, Esq. and Michelle Francis, Esq.
Amy Pollinger
Cynthia E. Potter
Mr. Michael Pusateri
Querido Foundation
Mr. Steven Andrew Rank
Rich & Rocky Giving Foundation
Ms. Yancey Richardson
Kenneth Richieri & Kathryn Obler Fund
Amy Riescher and Harold Eddins
Marc Roman and Holly Parker
Carmine Romano
Matthew J. Runkle and Rebecca Koepnick
Mr. Selig Sacks
Sagansky Family Philanthropies
Jeffrey F. Sagansky and Christy L. Welker
The Mimi Saltzman Family Foundation
Ms. Mimi Saltzman
Laurie Scheinman, A.I.A. and Martin Scheinman
Virginia M. Schirrmeister
Searchlight Capital Partners
Jamel Shabazz
Angela L. Shaw
Jane Shea and Patrick W. Shea
Hannah H.R. Shipley and Sam Shipley
Paula Sidewater
Mr. Siegel and Ms. Brown
Sony Music Entertainment, Inc.
Ms. Kimberly Spikes
Standard Chartered Bank
Richard P. Steinberg and Isabel Steinberg
Jacqueline Stockel
Glenn A. Stress and Michael Ginex
Kelly Sullivan
Ms. Felicia Taylor
Team Wallace Family Fund
The Milton Tenenbaum Charitable Foundation
The Mary Hilem Taylor Foundation
Marla A. Tomazin and Barry LePatner
Ms. Lori Townsend
Vital Habitats, Inc.
Ira Waldbaum Family Foundation
Elita Walker
Mr. and Mrs. Jay Wallace
Barbara Joan Wax Kassal
Ms. Jessica Weer

The Lois Weinroth Charitable Fund
Lois L. Weinroth
The Winfield Foundation
Ms. Andrea Woodner
May-Jean and Raymond Wu
Yancey Richardson Gallery
Martin Young

FRIEND \$1,000+
Nina Abrams Fund
Abramson Family Foundation
Acura of Bedford Hills
Acura of Valley Stream
Mr. and Mrs. Kenneth G. Adams
Lorraine Adams and Richard Price
Ms. Nancy Adelson
James Josef Adolf
Brian Ahrens and Heather A. Ahrens
Alfredo Paredes Studio
David Alge and Nan Mutnick
Alice + Olivia LLC
The W and E Allen Family Fund
Eleanor S. Allen and Warren L. Allen
Robert L. Amdur
Elaine A. Anderson
Lawrence and Hector Andrade-Reiff
Marianne Andreach
Josefina Ang
Peggy Ang
James Lerner Ansin
Brian Applegate
Alexandros Apsis
Mr. Zainal Arifin
Karen Armstrong
Ms. Cindy Arnold
Daniel Arnold
Mr. Daniel Aronson
Reid Ashinoff Giving Account
Reid Ashinoff
Ms. Annette S. Aspillaga
Jens Audenaert and Amol Shah
William Ayrovainen
Christopher Bachand-Parente and Katrina Nice
The Bachman Family Charitable Fund
Frederick and Wendy Bachman
Don Bacigalupi Giving Account
Don Bacigalupi and Dan Feder
Thomas R. Baird
Mr. Paul John Balson
The Barber Family Foundation
Dianne Barbieri
Mr. Stephen Barker
The Ken Baron Vanguard Donor Advised Fund
Kenneth C. Baron
Judy Barro Giving Account
Judy Anne Barro

Nancy Ann Bass Wyden and Ronald Lee Wyden
Ms. Alexa M. Battista
Laura A. Bauer and Leonard P. Diana
The Howard Bayne Fund
Alexander Bea
Laurie Beach
Mr. Jeffrey Bechtloff
Ms. Ursina Vera Beerli
Elizabeth Beers-Kataria
Mr. Gregory Ralph Belcamino
Ms. Sarah K. Bellissimo
Carol B. Belton
Ms. Yvette Bendahan
Robin F. Beningson
Stephen Berger and Cynthia C. Wainwright
Mr. James Berges
Dayle Berke and David Shapiro
Anneke A. Berken
Berkey Family Fund
Mitchell Berkey
Peter Bernstein and Jennifer Bernstein
Kathy Fein Bierman
Leon J. Bijou
Jill Bikoff
Sarah D. Billinghamurst Solomon and Howard Solomon
Andrew and Lauren Bilzin
Bird Fund
Stewart Bird
Dr. David Biro and Mrs. Daniella Vitale
Mr. Gregory D. Bishop
The Blaner Fund of the Jewish Communal Fund
Betsy M. Blattmachr and Jonathan G. Blattmachr
Joan Blessing Fund of Glenmede Donor-Advised Fund
Joan Blessing
Jacob Blickenstaff
BLL Foundation
Mr. Norman A. Bloch
Charles J. and Brenda Block Family Philanthropic Fund
Charles J. Block and Brenda Block
Eric Blomquist and Pete Webb
A.J. Bocchino and Phoebe Washburn
Ms. Nancy R. Bogen
Bracha N. Bomze and Carol Bloom
Ms. Lori Bongiorno
Donna M. Bowers
Ms. Savina Boyadjieva
Kriss Boyce
Meghan Bozek
Mr. Louis A. Bradbury and Mr. Kenneth Quay
Fiona Brady
Ann Marie Brancato
Ms. Diane Brand
Joan C. Brandy
Ms. Mary Bremer
R. Seth Bright
Steven J. Brill
Mr. and Mrs. Alexander Brodsky

Ms. Annabelle L. Brody
Rita and Charles Bronfman Philanthropic Fund
Rita Bronfman and Charles Bronfman
Mark Bowman Brooks and John Weinberg
Mr. Burt Brown
George Browning, III
Ms. Jennifer Brunette
Ms. Amanda Bruns
Ms. Barbara Murphy Bryant
Geraldine Bryant
Clifton P. Bullard
Ms. Janet Burati
Michael B. Burns
Bruce and Bettina Buschel
C.A.L. Foundation, Inc.
J. Victor Cain and Amanda Barshall Cain
Taryn Callahan-Miller
Peter Cameron
CAPTRUST Community Foundation, Inc.
W.P. Carey Foundation
David Carey
Ms. Jasneet Carrano
Ms. Anna Carsen
Mr. Thomas Cashin and Mr. Jay Johnson
Paula A. Castiglione
Cauldwell Wingate
Diego Cavalcanti Fund at Schwab Charitable
Ms. Esra Cavusoglu
Cerami & Associates
Henry and Kathleen Chalfant Fund
Henry and Kathleen Chalfant
The Chalk Jungle
Chalktalk Sports
The Sarah L. Challinor Fund
Sarah L. Challinor
Charitybuzz
Charles Schwab Foundation
Kym Chartash
Harvey J. Chasser
Ruth and Ezra Chesky Foundation
Deborah Chiu-Franklin
Henry Chou
Jane Chung and Robert Nagle
Andrew Ciarniello
The Joseph Ciner Foundation, Inc.
Mr. Brian Clark
Mr. John Clark and Mrs. Mary Clark
Mr. John S. Clark
Mr. Bruce Clayton
Mark and Jenny Clayton and Family
Ms. Traci Clinton
Ms. Ruth Cochran
Andrew Cohan
Cohen, Weiss and Simon LLP
Mr. Jonathan Cohen
Mr. Peter J. Cohen
Ms. Rita Cohen

Thank You to Our Supporters *(continued)*



LeRoy Cole, III
Collins Family Charitable Fund
Catherine A. Collins and William E. Collins
Daniel Collins
Ms. Maria A. Comella
Diane M. Condon and Andrew J. Brown
Renee Conforte
David Coogan and Ani Go
Ms. Carol L. Cooper
Darrell Cordry and Jill B. Cordry
Corinthian Capital Group
Corrao Miller Wiesenthal, Legal Search Consultants Inc.
Mr. and Mrs. Peter J. Coscia
The Michael & Ronne Cosel Foundation
Ms. Ronne Cosel and Mr. Michael Cosel
Cynthia J. Cox
Cozen O'Connor
Craft, LLC
Mr. William Cram
Ms. Carol Cramer
Elizabeth Crespo
Ian Crowther
Ms. Reilly Curtis
Anthony M. Daddi, Jr.
The Daily Karma Foundation
Mr. and Mrs. Marc Danais
Mr. Alex Dang
Igor Danila
Ms. Julie Daum
Cara David
Sheila K. Davidson
Ms. Christine Davis
Mr. Thomas Davis
Mr. Robert Day
Joanne de Guardiola and Roberto de Guardiola
Sylvia de Lange
Ms. Sandra de Ovando
Mr. Robert De Rothschild
Deanna Kory, Inc.
Ms. Sarah Deem
Ms. Debra Demartini
Phillip Dennis
John DeRemigis
William and Donna DeSeta Charitable Foundation
William and Donna DeSeta
David DeSocio
Stephen and Nola Deutsch Trust
Stephen H. Deutsch
Jenny DeVaughn
Harry B. DeVerter, Jr., A.I.A. and Barbara J. DeVerter
Mr. Scott Devine
William M. DiMichele
Ali Din
Dean-Michael Dolan
Miss Raven Dolling
The Domain Companies LLC
Teresa Donahue

Ms. Valerie Doran
Dorilton Capital Management LLC
Fred Doss and John Gicking Giving Fund
Mr. Fredrick D. Doss and Mr. John M. Gicking
Mr. Jamie Drake and Mr. Caleb Anderson
Ms. Lisa M. Dresner
Ms. Betty Duggan
Clay Dukes Fund
Clay Dukes and Hayley Dukes
Mr. Sam G. Dumas
Peter Dunham
James P. Durkin
Stephen A. Earle and Mitchell Gross
The Eberstadt Kuffner Fund, Inc.
Michael I. Eberstadt and Nina Beattie
Mrs. Anne Eddins and Mr. Harold Eddins
Anthony Edwards
Mr. Brey Brian Edwards
Thomas J. Edwards, Jr.
Thomas Burns Eich Giving Fund
Thomas Burns Eich
Barbara Eisold, Ph.D.
Tracy Elstein Togut
Marguerite & Talton Embry Fund
Talton and Marguerite Embry
EPIC
Equitable LLC
Nancy Erlich Donation Fund
Ms. Nancy Erlich
Bernd Erpenbeck
David Ettenberg and Ziporah Janowski
Lynn C. Faber and Karen H. Faber
Fabric Traditions
Facebook, Inc.
Linda Fairstein and Michael B. Goldberg
Candace Farmer
William H. Farmer and Stewart J. Rahtz
Victoria and Ben Feder Charitable Fund
Fein Foundation
Feinberg Foundation
Ms. Lindsay Feinberg
Charles and Lisa Feitel
Janet Feldman
Rodney Feuer and Leonard Iacona
R. John Fidelino
Ronald K. Fierstein and Dorsey Regal
Joan M. Finsilver
Mr. Nick Fischer
Mr. Daniel Fish
Rachel Fleishman
Mr. Robert B. Flock
David Flora
Mr. and Mrs. Howard Fluhr
Sara Foldenauer
Andrea and John Forbes Charitable Fund
Mr. and Mrs. John G. Forbes, Jr.
Arthur Foresta and Alina Alvarez

Kenneth and Lori Forrest
Carol L. Forte Charitable Fund
Carol L. Forte
Thomas and Madeline Foster
James A. Fox
Susan and Dan Fox
Mr. Jeff Frank
Kathy Franklin
Chef Amanda Freitag
Mr. Richard M. Friedberg
Ms. Catherine Frinier
Mr. LLoyd Frink
Frisk Donor Advised Fund (Anonymous Donor)
Mr. Ira Fuchs
Furgang & Adwar LLP
Carol Gadd and Steve Gadd
Ms. Maria Galison
James Gallagher and Nicole A. Gallagher
Tushna Gamadia, Esq.
Mr. and Mrs. James H. Gambrill
Ms. Caryn E. Ganeles
Laurie Gelbart and Larry Lefkowitz
Ms. Rachel Geller
Robert J. Geller
Ms. Michele Gerstel
Alicia Ginsberg
Ms. Marguerite Giuliano
Thomas A. Gladwell and Andrew Reynolds
Glenview Capital Management, LLC
Lesley E. Goldberg Donor Advised Fund
Leonard & Wendy Goldberg Fund
Lesley E. Goldberg
Wendy Goldberg
Michael Golden
Ms. Dina L. Goldman Kunin and Mr. Andrew P. Kunin
Kathleen M. Goldpaugh
Clifford and Katherine Goldsmith Philanthropic Fund
Katherine K. Goldsmith
Helen Strom Goldstein
Katherine T. Goldstein and Donald H. Goldstein
Jose Ramon Gomez and Osvaldo J. Hernandez
Mr. Victor G. Gotay
Thomas H. Gouge, M.D. and Joanne M. Gouge
Keith Granet
Mr. Michael H. Grant
Norma Grant
Marcy Ashley Gray
Great Northern Mortgage Corp
Ms. Gloria Greco
Mr. John Greeley
Green Mountain Minerals
Mr. Evan Green
Stuart Green and Jennifer Moses
Mr. Pierce M. Greene
Peter N. Greenwald and Nancy Hoffman
Greenwich Honda
Mark and Susan Grossbard

Seth Grosshandler and Kim Wainwright
Alan Grossman
Anthony S. Grosso and Catherine Grosso
Jen Grubbs
Geoffrey Gund Foundation
Mr. Geoffrey Gund
Sharon Gurwitz Charitable Gift Fund
Sharon B. Gurwitz
Guzzetta Manville Giving Fund
Francis John Guzzetta and Paul E. Manville
Ms. Rachel Z. Haber and Mr. Ari Mentzel
Mr. Steven Haber
Alexis B. Hafken
Joseph L. Halbach, M.D.
Hallen Welding Services, Inc.
James and Kandice Halpin
Susanne R. Handler and Todd B. Meck
Joan A. Harden
Mr. Kristopher Harper
Mark E. Harris and Anthony R. Kushner
J. Michael Hartstein and Laura Hartstein
Mr. and Mrs. Christopher S. Harvey
Dr. Anna B. Hatchett
Scott Haugen
Cheryl Hazan
Mr. Stephen B. Heintz
Hellessy LLC
Craig T. Hempstead
Mr. Joseph P. Henchey
Elizabeth A. Herbert and David Demnitz
Mr. Almiro Hermes
Mr. Mark S. Herr
The Heymann Foundation
John W. and Clara C. Higgins Foundation
Hannah Higgins
Hochberg Family Charitable Fund
Jeffrey D. Hochberg and Shira Hochberg
Peter Hochschild
Richard Bryan Hodos and Michael A. Jones
Hoerle Foundation
Robert Hoerle and Sheila Hoerle
Nathalie Hofman
Michael Hollander Fund
Michael Hollander
Holly Hunt, Inc.
Mark Holmen Family Fund of the New York Community Trust
Mark Holmen
Mr. and Mrs. Lester Holt
Mr. and Mrs. Robert Horne
HPS Investment Partners, LLC
Ms. Sharon McDonnell Hubregsen
Tracey Hummer
Jacob Hurwitz
International Business Machines Employees Service Center
Mary Iovino
Joan R. Isaac Giving Fund
Ms. Joan R. Isaac

Thank You to Our Supporters *(continued)*



Mr. and Mrs. Robert Ivanhoe
J. L. HVAC Inc.
Ms. Jean Jaslovsky and Mr. Vincent H. Gifford
Michael A. Jenkins and Ann K. Jenkins
Guillaume A. Jesel
JL 11 Fund of the Jewish Communal Fund
Johnson Giving Fund
Diane E. Johnson and Blake F. Johnson
Laura R. Johnson
Miles Johnson
Warren Jones
Mr. Eugene Jordan
Catherine Joseph
Patrick Judge
Adrian Kahan Leibowitz and Robert Leibowitz
D.J. Kahlo Fund
Kalis Family Fund
Mrs. Eva Kalis
Mr. Joshua Kanuck
W. M. Kanyuck
Bernee V. Kapili, M.D.
Marjorie E. Kaplan Fund
Mr. Steven Kaplan and Ms. Barbara Logan
Ms. Maria Karantzalis
Alain Karaoglan
Ms. Patricia Karetzky
Gary M. Karlitz and Rosalind Beck Karlitz
Kate Ryan Inc.
Matthew Katzenson
Judith F. Kaufer and Ralph M. Von Hollweg
Edward Kelley
Marc Kelly
Ann Kelman
Marie H. Kelsey and Edwin S. Kelsey
Harris and Eliza Kempner Fund
Christopher P. Kennedy
Denis J. Keohane, M.D. and Mr. Hector Palomo
KIA of Stamford
Ms. Christina Kenan Kirk
Richie Klein
Mr. Scott Klein
Daniel E. Kleinknecht
Ms. Catherine S. Klusek
Philip A. Konort
Andrea and Ed Kopel Charitable Gift
Mrs. Andrea Kopel and Mr. Ed Kopel
Lewis & Sharon Korman Foundation
Lewis J. Korman and Sharon Korman
Deanna Kory
Kristin Kovner and Michael de Guzman
Ms. Lillian E. Kraemer
Sallie and Stephen Krass
Mr. Kenneth Krebs
Rae Morgan Krelitz Charitable Fund
John Kucharczyk and Deborah Kucharczyk
Robert R. Kulikowski and Christopher Collins
Kunin Family Foundation

The Kurzrok Foundation, Inc.
L Brands Foundation
Ms. Mary Lake
Thomas R. Lalla, Jr. and Giovanni Mancini
Rachel S. Lam Fund
Frank Lam and Mark Chinitz
Ms. Rachel S. Lam
Barbara G. Landau
Deborah and Rocco Landesman
Mark H. Lanspa
Leila Larijani
James P. Larkin
The Marilyn & Bob Laurie Foundation
Lawler Giving Fund
Lisa Lawler
Lawrence Family Trust
Jesse Lawrence and Mary Elizabeth Lawrence
Larry J. Lawrence
Sandra Lynn Lazo and Donald H. Layton
Jennifer Leahy
Learn It, Earn It, Return It
Zev Lebowitz and Eliza Quanbeck Fund
Mr. David M. Ledy
Richard Lee
Leeway Home, Inc.
Jeffrey F. F. Leimsider and Donald Goodale
Lena Foundation
Richard H. Lerner and Ana Lerner
The R M Levine Fund
Ms. Randi Levine
Ruth Levine
Mr. Irving Levitan
Lewis Giving Fund
Daniel Lewis and Valerie Dillon
David Lewis and Wendy Lewis
Thornton David Lewis and Sheila Lewis
Ms. Lesley Liao
Mr. Arthur Libera
Miss Carina Liebeknecht
Lindemann Abend Foundation
Clare Linnie
Barry R. Linsky and Jane W. Linsky
Lipton Family Foundation
Susan and Martin Lipton Philanthropic Fund
Martin Lipton and Susan Lipton
The Litwin Foundation, Inc.
Donna Livolsi
Jeffrey Lockhart
Thomas W. Lollar
Fei Long
Julian E. Lopez
Love, Light & Namaste Fund
Alan Lubliner and Maya Nascimento
Lubrano Family Charitable Foundation
David Ludwigson and LaMont W. Craig
Anthony Lyons
M&T Charitable Foundation

Ms. Gina MacArthur
Ms. Jane Macdonald
Macksoud/Kehoe Charitable
Ann MacMurray
Ms. Carolyn Magill
Joan Magoolaghan and Lawrence J. McElroen
Mrs. Maxine C. Maher and Mr. Gerald Maher, Sr.
Mr. Arthur J. Mahon
Ms. Nancy B. Mahon and Ms. Susan Trerotola
Caitlin Mahoney
The Mak Fund
Durga Mallampalli
Richard Malloch
The Mancheril Family Charitable Fund
Jacob Manczyk and Jill Manczyk
Alicia Mang
Ms. Sharon Marcus
Jon A. Maroto
Nathan Marrow
Marsh & McLennan Companies, Inc.
Stephen Martiros
Ms. Leslie Mason
Mrs. Mary Anne Massey
John and Jane Mather
William D. Matuoizzi, M.D. and Heidi Matuoizzi
Sharon R. Mayberry
The Family Mayer Foundation
Kate McCabe and William McCabe
Mr. Dennis M. McCann
McCarthy Tétrault LLP
Kelly K. McCormick
Patricia A. McDonough
Paul McDonough
Mr. Michael McGahey
Ms. Margaret McGrath
Ms. Anne Hearst McInerney
Joan McKay Charitable Fund
Julian McKenna
Frances S. McKenzie
Maryalice McNamara
Thomas D. McRae, M.D.
Emma Lucy Medcalf
R. Debra Meierfeld and Steven Edward Meierfeld
Jeffrey D. Meleski and Steven Markov
Mr. Joseph Mentey
Elizabeth Merena
Carol Merkel
Mesereau Fund
Metzger-Price Fund, Inc.
MGG Foundation
Henry S. & Margaret Gay Mika Charitable Foundation
Elazar Milbaur
Ms. Kaley Millan
William and Barbara Miller Fund
Bruce N. Miller
William and Barbara Miller
Albert S. Mishaan and Jennifer Colyer

Ms. Phyllis Mishkin
Ms. Courtney Mitchell
Ms. Jihan Mnaymneh
Alexandre Amir Montagu, Esq.
Ross R. Moody
Crystal Morales Coto
Ralph E. Morgan and Pamela P. Morgan
Morningside Foundation
Stephen Morris and Elliot Kreloff
Mr. Alan J. Morrison
Henry and Helene Morrison
Andrew L. Morse
Jennifer Moses and Stuart Green Philanthropic Fund
Barbara Moses Fund of the Jewish Communal Fund
Ms. Barbara Moses
Hanna and Jeffrey Moskin
Mount Kisco Honda
Jeffrey Munger and Robert Whitman Charitable Fund
John
N & D Richardson Charitable Fund
N. Pologeorgis Furs, Inc.
Anjuli Nanda Diamond and Charles Diamond
Irene C. Nardolillo
Leonard Nathanson and Nina Nathanson
Matthew Neiger Giving Account
Matthew Neiger
The C.E. Nelson Charitable Fund
Cindy Ellen Nelson
New York City State Employees Federated Appeal
The New York Gay Pool League, Inc.
Jeffrey and Selma Newman
Tom Nichols and Dan Chadburn Charitable Fund
Tom Nichols and Dan Chadburn
Marilyn Nickel
Susan Nickerson
Ms. Dror Nir
Igor Noble, Esq.
Mr. Hayim Nommaz
Benjamin Noriega-Ortiz
Mr. and Mrs. Stephen F. Novis
George Nunno
Scott David Oaks
Wayne Oates
Michael Patrick O'Donnell
Mr. Michael A. Ognibene
David Ogrin
Ms. Paula J. Omansky
Ryan and Suzanne Ona
William J. and Dorothy K. O'Neill Foundation
Inno J. Onorato and Rukhsana Onorato
Kerry O'Shea
Ms. Ellen Ostrow
Mr. O'Sullivan and Ms. Tricarico
Ovando, Inc.
The Page & Otto Marx, Jr. Foundation
Joseph J. Palermo
Nathaniel J. Palmer

Thank You to Our Supporters *(continued)*



Helene Pandone
Darren S. Parslow
Arvind M. & Varsha A. Patel Family Charitable Reserve Fund
Arvind and Purnima Patel
Trupti Patel and Jeffrey Rohwer
Mr. Hugh T. Patrick
Patricia J. Patterson
Ms. Debra L. Paull and Mr. Nat Paull
Clio C. Pavlantos
Paypal Giving Fund
F.W. Pennington
Ms. Meme S. Peponis and Mr. Arthur Peponis
Laura Peracchio and Daniel Eder Family Foundation
Dr. Laura A. Peracchio
Joseph R. Perella and Amy Perella
Harry Peress
The Julius Perlman Charitable Fund
Susan Perlman and Kenneth Nelson
Jeffrey A. Pfeifle and David Granville
Mr. Robert Phay
Ms. Deborah A. Phelps
Irving & Constance Phillips Charitable Fund
Constance Phillips
Samuel and Grace Pilcer
Pledgeling Foundation
Plevan Family Fund
Mr. William Plevan
Michael Plofker
Bernard Plum and Charlotte Behrendt
PM Foundation
Laurie Ferber Podolsky Charitable Trust
Morris Podolsky and Laurie Ferber-Podolsky
Terry B. Porter
Posner-Wallace Foundation
Mr. Leonard Post
Tom Postilio and Mickey Conlon
Ron B. Prince and Mark Hartnett
David Provost Charitable Giving Fund
David J. Provost
Ms. Michelle Quick
Laura A. Quinn
Ms. Maria Quinn
Mr. and Mrs. Bruno Quinson
Ms. Robin Quivers
QVC, Inc.
Ms. Denise Rabinowitz
Mr. David Raifaizen
Jonathan L. Raiola
Bhargavi Ramamurthy
Celeste Rault
Claudia Ray
Nadene L. Re and Steven J. A. Re
The William Reader Fund
Mr. William R. Reader in memory of Lester Bowman
Mr. Timothy Reardon
Gordon Redgate
The Reeb Family Giving Fund
Lloyd Reeb

Ms. Angela M. Reed
Reynolds Family Trust
Barbara G. Reynolds
Emma Reynolds
Nelson B. Richardson and Denis C. Richardson
Patricia Riedy
John L. and Margaret Riegel Foundation
Ms. Margaret Riegel and Mr. Clemens Steinbeck
Mr. John Rielly
Risafi Wheeler Fund
The Riverside Company
Riverside Gives Fund
Hussain S. Rizvi
Ms. Carol J. Rizzo
Mr. Douglas Roach
Anthony Robins
Meridith B. Roelke and Jason L. Roelke
Alan J. Rogers
Mr. Mickey Rolfe and Mr. Bruce Tracy
Ms. Laura Romanoff
Ron Prince Marketing LLC
Deborah Roncari
Alexander Roque
Andrew Rosen
Benjamin G. Rosenblum and Deborah Berkman
Aimée Dicker Ross and David E. Ross
Mr. Richard Roth
Ms. Sheila Rothman
Timothy Ruark
Ms. Elizabeth Rubino
Shari Rueckl and Ryan R. Rueckl
Runnymede Foundation
Margaret Russell Giving Fund
Margaret Russell
Georgina T. & Thomas A. Russo Fund of the Schwab Charitable
Thomas A. Russo and Georgina T. Russo
Carla T. Rutigliano
Mr. and Mrs. Robert Rutkoff
Courtney Saavedra
Bradley K. Sabel and Nancy J. Sabel
Jini Sachse
Mr. Mark Saeger
Mark L. Sahre
Amy Salant
Mr. David J. Samuel and Ms. Maura R. Sircus
Ms. Dorothy Samuels and Mr. Peter Samuels
William H. Sandie and Sean Cahill
Stephen M. Santa Barbara
The Lawrence and Carol Saper Foundation, Inc.
Carol and Lawrence Saper
Behnaz Sarafpour and Evan Shumeyko
Sarah Silver Photography Inc.
Christina Sardone
Floyd C. Saums
Michael Savage and Joanne Savage
Giulia Scargetta and Alessandro Albanese
Richard J. Schaubeck, Jr.
Annie Schlechter

Mr. Greg E. Schmidt and Mr. Alexandre Monteiro
Ms. Elizabeth Schneider
Mindy Schneider and Michael Lesser
Schoellerman Foundation
Jeffrey A. Schoenfeld
Scholl Foundation
Mr. Austin Scholl
Judy and Bennet Schonfeld
Steven Schultz
Dr. Gerri E. Schwartz
Martha A. Schwartz
Ms. Christine Sclater
Jonathan Seale
Protocol
Noah M. Shachtman
Fatima Shama
Frank M. Shanbacker and Bruce Klinger
The Karen & Jay Shapiro Charitable Fund
The Shapiro Family Foundation
Ellen Shapiro and Steve Shapiro
Mr. and Mrs. Jay P. Shapiro
Shirley Shapiro
Laurie R. Shapley and Robert M. Shapley
Christopher B. Shaw and Michelle Tan
Ms. Rachel Shechtman
Brigid Sheehan
Elisabeth Sherman
Lisa E. Sherman and Julie Lichtstein
Robert Sherman
Scott Sherman, M.D.
Mr. Scott P. Sherman
Kimberly Shirley
The Amy and Mark Shirvan Family Foundation
Amy Shirvan, and Family and Mark Shirvan
Susan Stein Shiva Foundation
Gil Shiva
Jennifer M. Shotwell
Lori Sidman
Michael D. Silber
Douglas Silverman
Ms. Wendy Silverstein
Denise Simms
James L. Simon Charitable Trust
Beatrice Skala
Skoniecki Giving Fund
Jakub Skoniecki
Ms. Rachel Sloan
Victoria Sloan
Smul Family Giving Fund
Mr. Spencer Smul and Mrs. Karen Smul
Shannon Denise Snead and Daniel Robert Jones
Thomas H. Snyder
Sandra Sockett and Mitchell C. Sockett
Irene Gruber Sollano and Joseph Sollano
Cornelia Sollecito
Phyllis Sollecito
Mr. Stephen Sondheim
Victoria Sorrell

Mr. Scott Spector
Anne Katrin Spiess Philanthropic Fund
Anne-Katrin Spiess
Ms. Louise A. Springer
St. Francis Monastery
Lesley R. Stahl
Stamford Subaru LLC
The Richard and Patricia Starr Family Fund
Mr. Richard Starr
The Statue Foundation, Inc.
Lynn M. Stekas and John P. Daley
David Stern and Jody Stern
Sertz Family Foundation
David Sertz
Mr. David Stetson
Donald and Christine Stevens
Susan Stevens
Mr. Neil Stevenson
Steward Family Fund
Chris Steward
Robert Stilin
Mr. Michael Stinchcomb
Mr. and Mrs. Robert L. Stine
The New York Community Trust Stronach-Buschel Fund
Strongin Rothman and Abrams LLP
Ms. Lorrie I. Stuart
John and Margaret Sweeney
Randall W. Swisher
Molli S. Taft
Taranto Family Foundation, Inc.
Joseph and Anne Taranto
Robyn Tarnofsky and Antony L. Ryan
Christopher S. Tarzia
Tasty Ribbon, LLC
Risa Tatarsky Fund
Ms. Risa Tatarsky
Diego Tavares Cavalcanti
Marc and Sharon Teitelbaum
Mrs. Sharon Telesca Feurer and Mr. Gerald Feurer
The Temkin Family Foundation
Alyce P. Thomas
Aaron Michael Tievsky and Frank Delany
Mr. David Toledo and Ms. Amy Toledo
Mr. Brian Toro and Mrs. Natalia H. Toro
John Torres
John Townsend and Karen Anne Kazer-Townsend
Ms. Laura Traphagen
Trina Turk
Sereno Tripiano and Brian Cook
Theresa Trzaskoma and Nicholas Turner
Tuesday Morning Kitchen Crew
Colleen Tully Pace and Jack E. Pace, III
Mx. Tamara Tunie
Unger Family Fund
Mr. and Mrs. Howard Unger
United Way of Greater Los Angeles
Richard R. Upton and Josef M. Gonzalez
Valley Stream Foreign Cars, Inc.

Thank You to Our Supporters *(continued)*



Jennifer Van Dalen
Benjamin Vandiver
Sheila M. Vaughan
Mrs. Camilla Velasquez
Ms. Jessica Velmans
Karen Vicario and Ruth Vicario
Mr. Nicholas Viennot
Eugene P. Villani and Douglas Reilly
Mr. Michael Vitrano and Ms. Katherine Richardson
John Vlachos
Ourania Vokolos-Zias and J. Zias
M Wahlberg Youth Foundation
Wainwright Berger Philanthropic Fund
Daniel C. Walden and June C. Walden
Jeanne Walsky and Andrea E. Kircher
Suzette Wanninkhof
Eliza Weber
Marla Sue Weinhoff
Weinman Family Foundation
Marjorie Weinman and Mitchell Breit
Ms. Edith I. Weinstein
Katherine G. Weinstein
Sonja Weissman
Eric Wellman
Nancy L. Wender and Steven J. Rand
Edward J. Weppler
Lucille Werlinich
Nigel Weston and Christine Weston
Christine and Ian Whalley
Steven Wheeler and Peter Francis Risafi
Jason Whitman
Robert T. Whitman and Jeffrey H. Munger
Samuel Wiener
Wiles Charitable Gift Fund
Michael Wiles
Tiffanie Williams
Francine and Herbert Wilson Fund
Herbert and Francine Wilson
Peter S. Wilson and Scott K. Sanders
Mr. Andrew Wingrove
David Wisdom and Sarah Wisdom
Mr. Christopher J. Wolf
Joyce Wolf
Dr. Michael C. Wolf
Mr. Richard L. Wolf
Mr. Charles Wooten
Kenneth A. Wright
Sheridan Adair Wright, II and Perry Wolfman
Ms. Li Jun Xian
Ms. Jessica Yager
MaryAnn Zacharia Foundation
Paul P. Zakris
Kathleen A. Zammit and Victor J. Zammit
The Judy Francis Zankel Charitable Fund
Judy Francis Zankel
Barbara Mounsey Zeins and Wallace R. Zeins
Ms. Robin Zendell

GOVERNMENT

Hudson County Board of Chosen Freeholders/
Hudson County Dept. of Human Services
(Ryan White Part A)
Hunger Prevention and Nutrition Assistance Program
Emergency Food and Shelter Program
New York City Department of Mental Health and
Hygiene/ Public Health Solutions/HIV Care
Services (Ryan White Part A)

New York City Council Members

- Corey Johnson, Speaker of the New York City Council and the entire City Council
- Council Member Adams (QN-28)
- Council Member Ayala (BX-8)
- Council Member Chin (MN-1)
- Council Member Cohen (BX-11)
- Council Member Cornegy (BK-36)
- Council Member Feliz (BX-15)
- Council Member Gibson (BX-16)
- Council Member Levine (MN-7)
- Council Member Powers (MN-4)
- Council Member Rivera (MN-2)
- Queens Delegation

IN KIND

Andrew Edlin Gallery
Andrew L. Edlin
Blank Rome LLP
Bloomberg
Doug Beube Studio
EisnerAmper LLP
Fountain House Gallery
Furgang & Adwar LLP
Galeria MUY
Gallery Jota
Greg Kucera Gallery
Hedges Projects, LLC
Howard Greenberg Gallery
M.A.C Cosmetics
Marion Harris
Mr. Douglas Beube
Mr. Greg M. Kucera
Mr. Jimmy Hedges
Orrick, Herrington & Sutcliffe LLP
Our Volunteers
Project Onward
Ricco/Maresca Gallery
Seyfarth Shaw LLP

BEQUESTS

Estate of Charlotte A. Alexander
Estate of Daniel F. Berkowitz
Estate of Stanley V. Diglio
Estate of Joseph H. Dipper
Estate of Rev. John J. Dorgan
Estate of James A. Everett
Estate of Abraham Fistel
Jill and Jayne Franklin Charitable Trust
The FRK Foundation
John Gray Irrevocable Trust
Estate of Mary G. Heiser
Estate of Lois Elaine Larsen
Estate of Josef P. McAvoy
Estate of Ingeborg T. Price
Estate of Vincent J. Villa
The Edith I. Weinstein Trust

Leadership



Board of Directors

Chair

Terrence Meck

Vice-Chairs

Blaine Trump

Patricia Suh

Treasurer

Karen Naber

Secretary

Claudia Wagner

Culinary Council

Zoe Adjonyoh

Liz Alpern

Michael Anthony

Marika Bender

Linda Goode Bryant

David Burtka

Jake Cohen

Samah Dada

Amanda Frietag

Daniel Metzger

Natasha Pickowicz

Mavis-Jay Sanders

Sicily Sierra

Julia Turshen

Irene Wong

Directors

Erich Anderer, M.D.

Michael Anthony

Jens Audenaert

Mark Brashear

Jonah Disend

Scott Durkin

Roberta Graves

Desiree Gruber

Michael Kors

Aerin Lauder

Eric Leventhal

Michael Meagher

Alfredo Paredes

Tangela Richter

Joan Rivers*

Ariana Rockefeller

Danielle Segal

Ryan Tarpley

David Terveen

Katy Williamson

Sheridan Wright

**In Memoriam*

Board Of Trustees

Michael Sennott, *Chair*

Deborah Bachrach

Scott Bruckner

Susan Etes

Richard E. Feldman, Esq.

Jon Gilman

Lester Gribetz

Adrian Kahan

Jeffrey Krauss

Mark Lanspa

Mark Lehrer, Esq.

Gerald Madigan

R. Michael Moran

Andy Peters Julie Pinkwater

Jonathan Raiola

Bill Ribbecke

Alan Rogers

Margaret Russell

Lisa Sherman

Tamara Tunie

Sylvia Vogelmann

Greg Williamson

Paul Wilmot

Rod Winterrowd

Vicente Wolf

Leadership Council

Alberto Apodaca

Nicholas Athanail

Elina Baygildina

Michael J. Crooke

Joseph A. Dolce

Bryan J. Frank

Shane Hogan

Kathryn Hurley

Michael Mahoney

Heather McDowell

Philip Parrotta

Nicholas Pramik

Earl D. Silas, Jr.

David Stark

genLOVE Executive Committee

Joshua Cohen

Nicholas Compagnone

Julia Cordry

Lindsay Feinberg

Joanna L. Groarke

Trent M. Huffman

Eryn M. Hughes

Alexandra Idol

Chloe Kelley

Jonathan Lau

Anjuli Nanda Diamond

Christina Sardone

Executive Staff

President & CEO

Karen Pearl

Vice President & Chief Development Officer

David Ludwigson

Chief Financial Officer

Michael Tuccillo

Chief Human Resources Officer

Marla Hassner

Connect With Us!

166 Avenue of the Americas
New York, NY 10013

Tel 212.294.8100

Fax 212.294.8101

[GodsLoveWeDeliver.org](https://www.GodsLoveWeDeliver.org)

To Become a Client:
800.747.2023

To Volunteer:
212.294.8158

To Make a Donation:
212.294.8142



GodsLoveWeDeliver



GodsLoveNYC

#FoodIsMedicine

#GodsLoveWeDeliver